

DH500 (A607)

PARTS CATALOG

INTRODUCTION

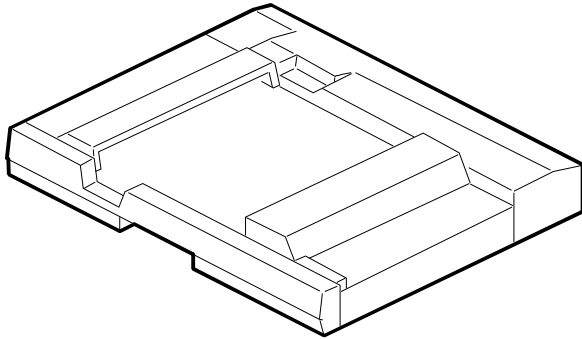
This chapter instructs you the numbers and names of parts on this machine.

INDEX to PARTS CATALOG

LOCATION OF UNIT	2
1.EXTERIOR (A607).....	4
2.FEED-IN SECTION (A607).....	6
3.SEPARATION SECTION (A607).....	8
4.FEED-OUT SECTION (A607).....	10
5.TRANSPORT SECTION (A607).....	12
6.INVERTOR SECTION (A607)	14
7.EXIT SECTION 1 (A607)	16
8.EXIT SECTION 2 (A607)	18
9.ORIGINAL TABLE (A607)	20
10.FRAME SECTION (A607)	22
11.ELECTRICAL SECTION (A607).....	24
12.MAIN CONTROL BOARD (A607).....	26
13.DECAL AND DOCUMENT (A607).....	30
PARTS INDEX	33

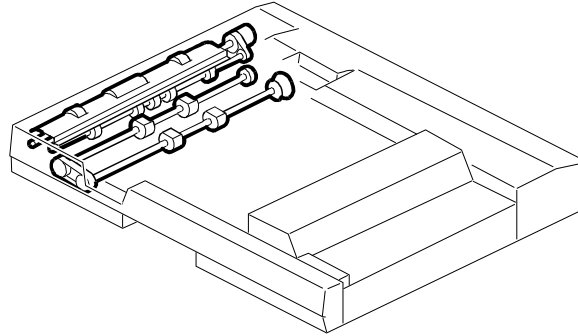
LOCATION OF UNIT

1. EXTERIOR (A607)



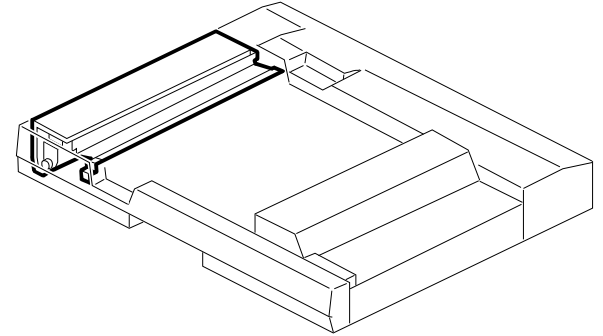
See Page 4

2. FEED-IN SECTION (A607)



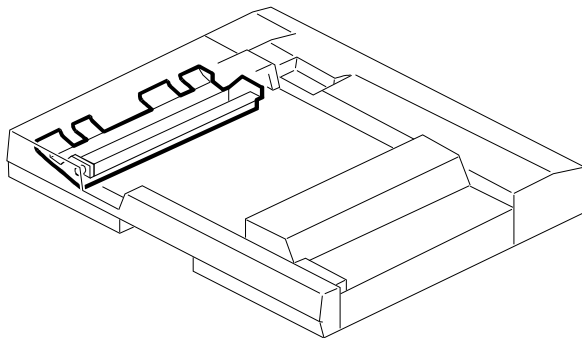
See Page 6

3. SEPARATION SECTION (A607)



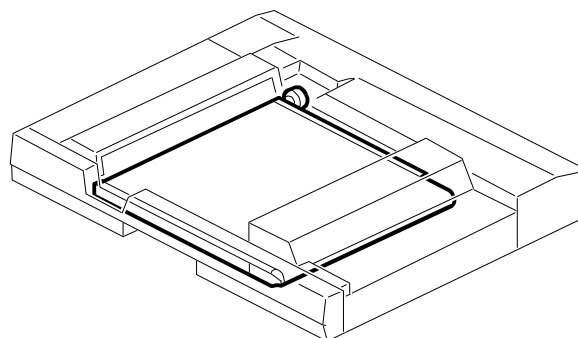
See Page 8

4. FEED-OUT SECTION (A607)



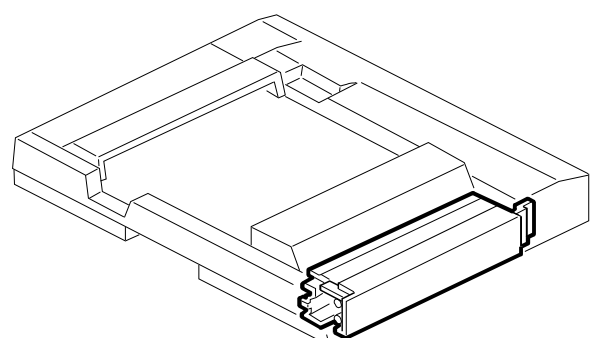
See Page 10

5. TRANSPORT SECTION (A607)



See Page 12

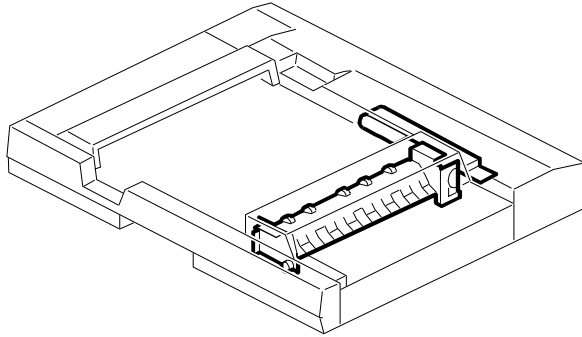
6. INVERTOR SECTION (A607)



See Page 14

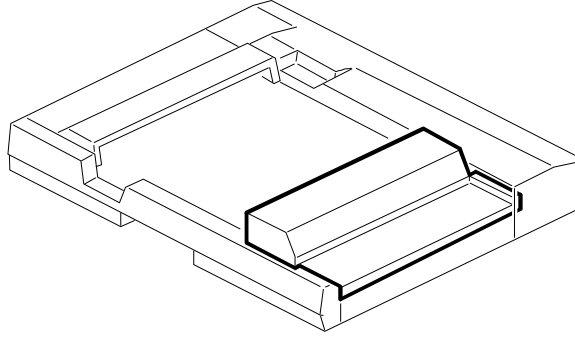
LOCATION OF UNIT

7. EXIT SECTION 1 (A607)



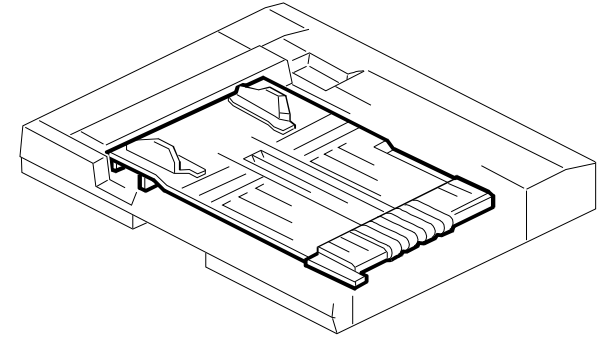
See Page 16

8. EXIT SECTION 2 (A607)



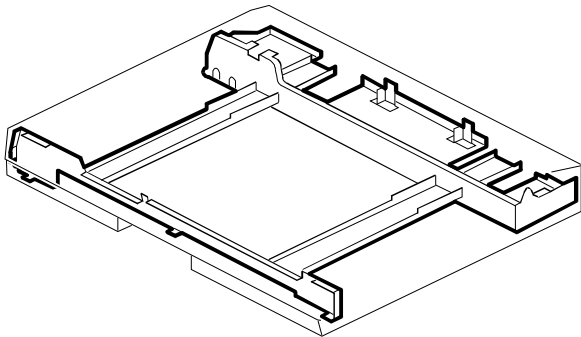
See Page 18

9. ORIGINAL TABLE (A607)



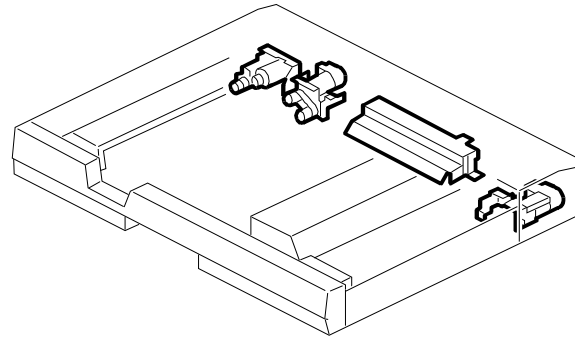
See Page 20

10. FRAME SECTION (A607)



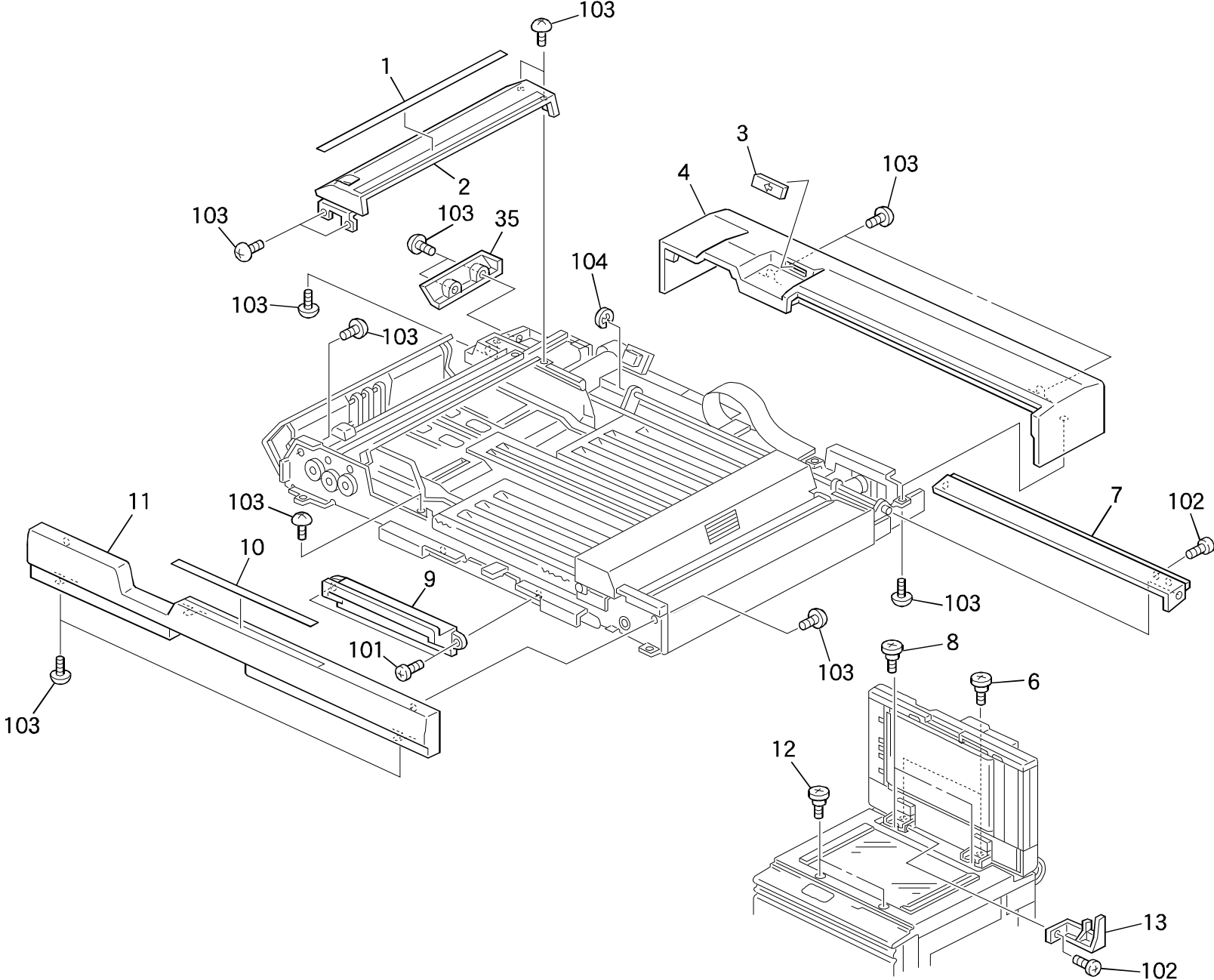
See Page 22

11. ELECTRICAL SECTION (A607)



See Page 24

1. EXTERIOR (A607)

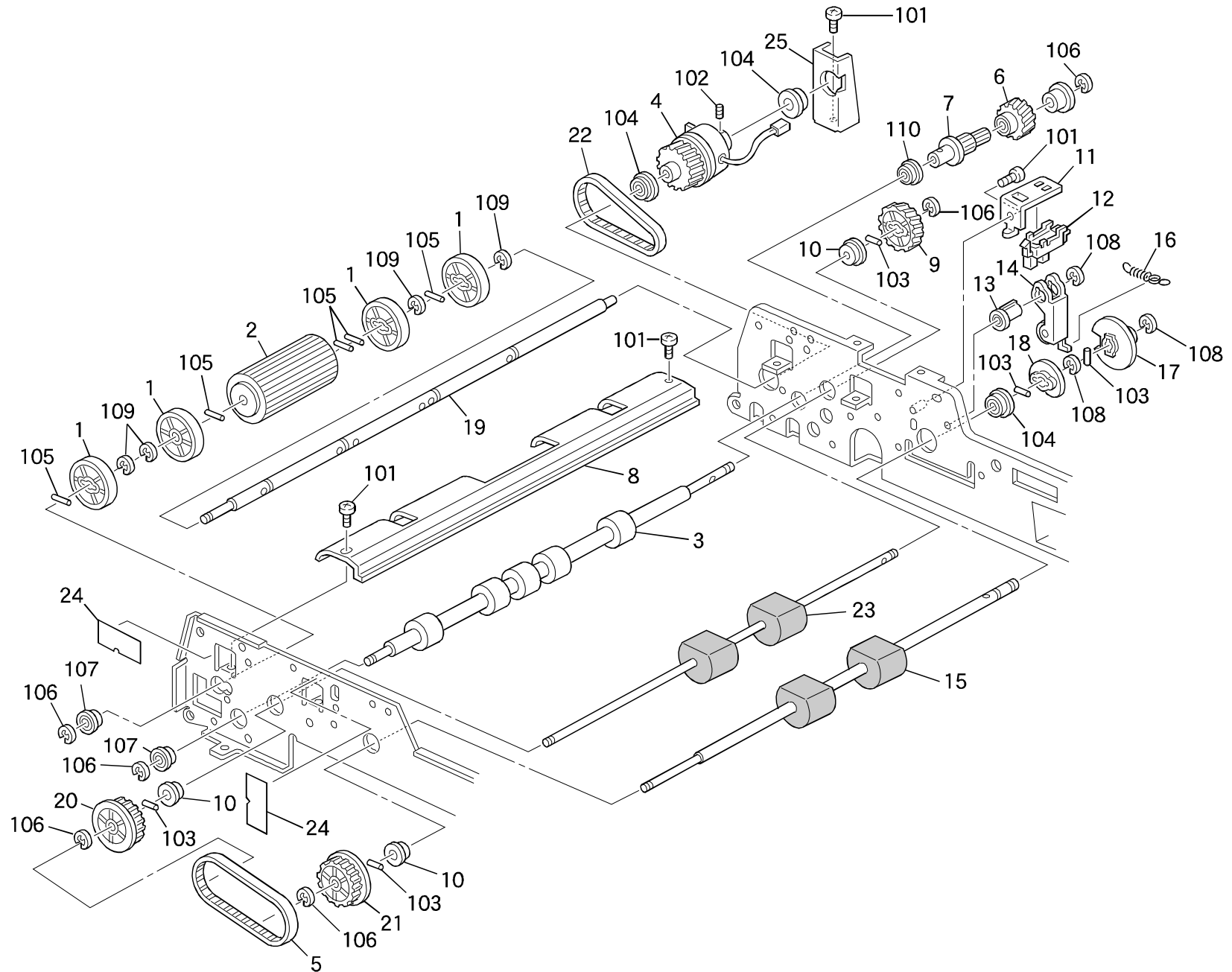


1. EXTERIOR (A607)

Index No.	Part No.	Description	Qty Per Assembly
1	A607 6036	Decal - Exit	1
2	A607 3561	Cover - Paper Feed - Upper	1
3	A499 3531	Indication Panel	1
4	A607 3511	Cover - Rear	1
5	A607 3516	Cover - Rear Lower	1
6	A378 4112	Sholder Screw M5	2
7	A607 3591	Cover - Open And Close	1
8	A378 4111	Sholder Screw - M5	2
9	A607 3621	Grip - Magnet Catch	1
10	A607 6011	Decal - Side Fence	1
11	A607 3541	Cover - Front	1
12	A378 4114	Sholder Screw - M4	2
13	A378 4116	Switch Actuator	1

Index No.	Part No.	Description	Qty Per Assembly
101	0314 0060W	Philips Pan Head Screw - M4x6	
102	0314 0080M	Philips Pan Head Screw - M4x8	
103	0354 0060D	Sunk Screw - 4x6	
104	0720 0040E	Retaining Ring - M4	

2. FEED-IN SECTION (A607)

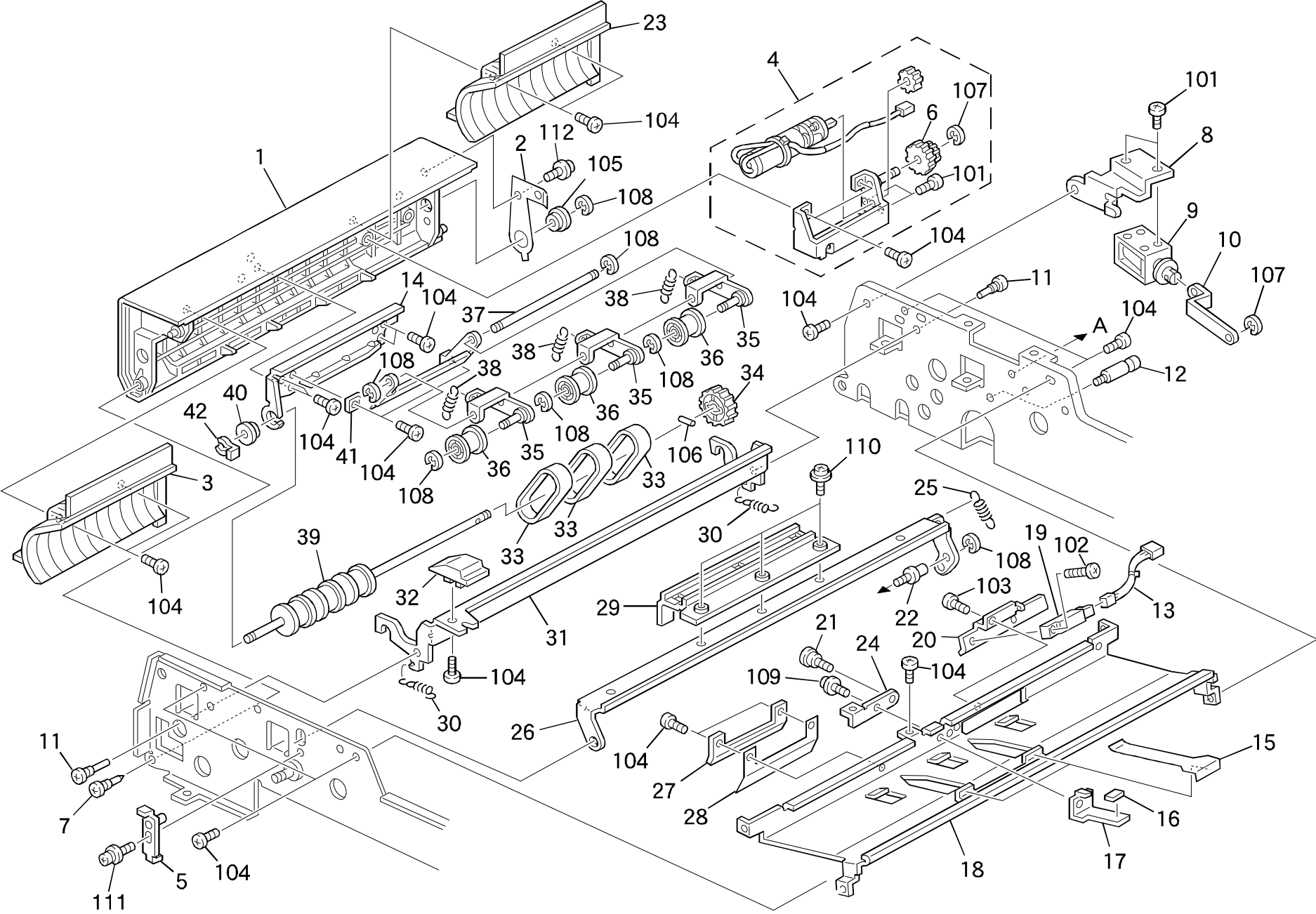


2. FEED-IN SECTION (A607)

Index No.	Part No.	Description	Qty Per Assembly
1	A499 1212	Guide Roller	4
2	A378 1211	Separation Roller	1
3	A607 1099	Feed-out Roller	1
4	A607 1221	Separation Solenoid	1
5	A378 1084	Timing Belt - 192XL	1
6	AB01 1086	Gear - 20Z	1
7	A607 1092	Gear - 20Z	1
8	A607 1226	Separation Middle Guide	1
9	A378 1091	Gear - 32Z	1
10	A422 1078	Bushing - 6x12x4mm	3
11	A607 1467	Sensor Bracket	1
12	5216 5245	Photointerruptor - LL-G-3P-S3T2-E	1
13	A499 1465	Bushing - 5M	1
14	A499 1461	Cam Lever	1
15	A607 1027	2nd Pick-up Roller	1
16	AA06 0279	Pressure Spring	1
17	5936 1145	Position Encoder	1
18	A499 1458	Pick-up Roller Cam	1
19	A607 1217	Separation Drive Shaft	1
20	A378 1096	Pulley - 24Z	1
21	A378 1095	Pulley - 18Z	1
22	A607 1219	Timing Belt - S2M126	1
23	A607 1026	1st Pick-up Roller	1
24	A378 3133	Seal	2
25	A607 1218	Separation Drive Bracket	1

Index No.	Part No.	Description	Qty Per Assembly
101	0314 0060W	Philips Pan Head Screw - M4x6	
102	0574 0040E	Hexagon Headless Set Screw - M4x4	
103	0632 0100E	Pin - M2x10	
104	0805 3291	Ball Bearing - 8x16x5mm	
105	0632 0140E	Parallel Pin - M2x14	
106	0720 0040E	Retaining Ring - M4	
107	0741 3506	Ball Bearing - 6x12x4 mm	
108	0720 0060E	Retaining Ring - M6	
109	0720 0070E	Retaining Ring - M7	

3. SEPARATION SECTION (A607)

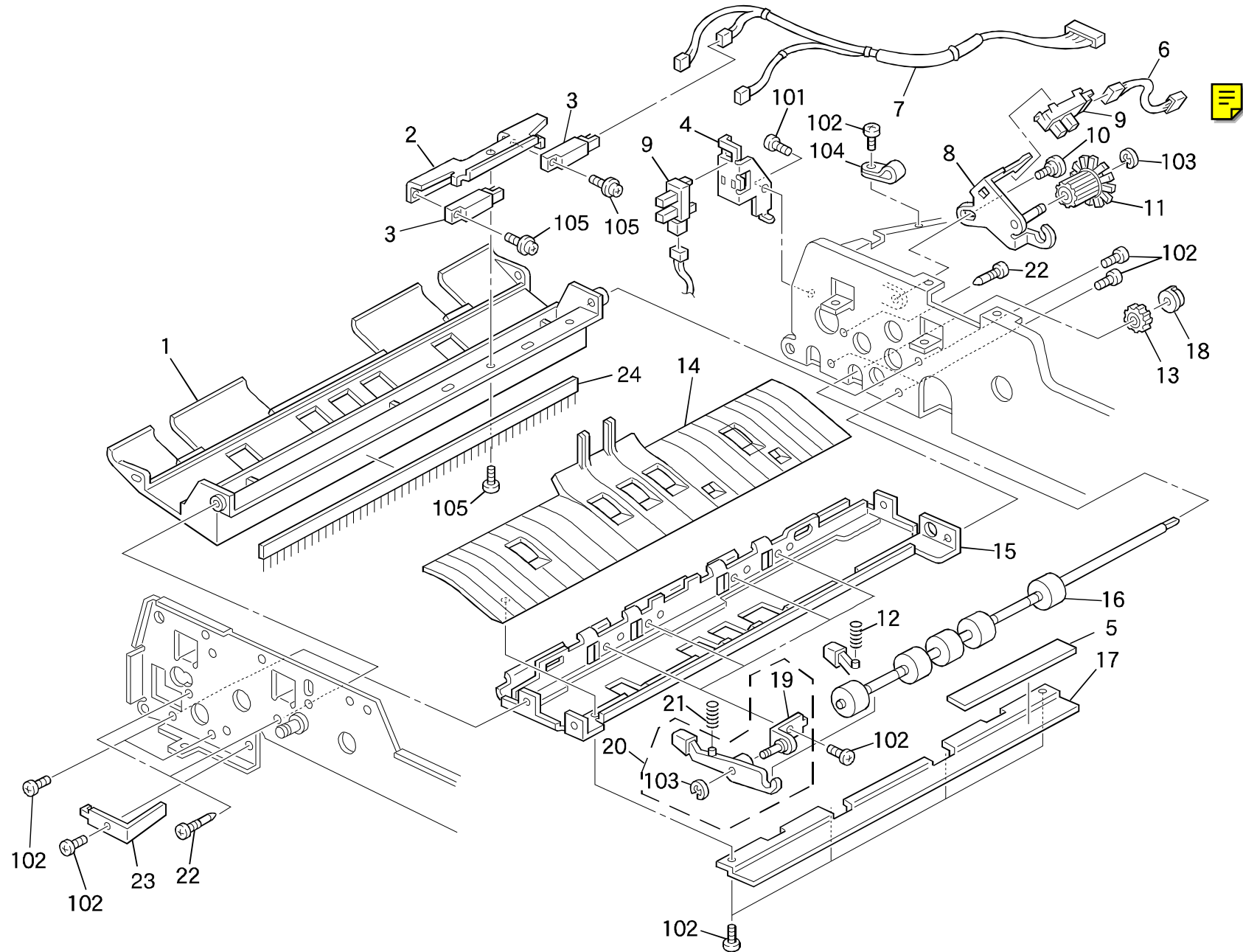


3. SEPARATION SECTION (A607)

Index No.	Part No.	Description	Qty Per Assembly
1	A607 1111	Cover - Paper Feed - Left	1
2	A499 1153	Grouding Plate	1
3	A499 1126	Separation Guide	1
4	A499 1120	Separation Belt Holder	1
5	A499 1326	Holde - Original Stopper Bracket	1
6	AB01 0049	Gear - 31Z	1
7	5446 2824	Screw - Duplex Guide Plate	1
8	A607 1331	Stopper Solenoid Guide	1
9	AX11 0056	DC Solenoid - 24V	1
10	A499 1332	Stopper Solenoid Lever	1
11	5415 4145	Stud	2
12	5403 1910	Spring Anchor - Stopper Lever	1
13	A607 5603	Original Sensor Harness	1
14	A499 1123	Left Cover Bracket	1
15	A499 1317	Guide Seal	2
16	AA16 1022	Cushion	1
17	A499 1335	Stopper	1
18	A499 1305	Original Entrance Guide	1
19	AW01 0070	Photosebsor - PS-R11D1-B	1
20	A499 1315	Original Sensor Bracket	1
21	H006 2171	Stepped Screw	1
22	A499 1325	Stud - M4x5	1
23	A378 1127	Rear Separation Guide	1
24	A499 1336	Stopper Positioning Plate	1
25	AA06 0277	Release Spring	1
26	A499 1321	Original Stopper Bracket	1
27	A499 1312	Separation Guide Bracket	1
28	A499 1313	Paper Guide Mylar	1
29	A499 1323	Original Stopper	1
30	AA06 0278	Release Spring	2
31	A499 1341	Release Lever - Separation Unit	1
32	A607 1280	Paper Feed Lever	1
33	A499 9500	Separation Belt - 3pcs/set	1
34	AB01 0050	Gear - 32Z	1
35	A499 1131	Tension Roller Holde	3

Index No.	Part No.	Description	Qty Per Assembly
36	A499 1135	Tension Roller	3
37	A499 1129	Shaft - Tensionroller Holder	1
38	AA06 0276	Spring	3
39	AF02 0167	Drive Roller Separation Belt	1
40	A422 1078	Bushing - 6x12x4mm	1
41	A499 1122	Shaft Holder	1
42	5447 2681	Snap Ring	1
101	0313 0040W	Philips Pan Head Screw - M3x4	
102	0313 0060M	Philips Pan Head Screw - M3x6	
103	0313 0060W	Philips Pan Head Screw - M3x6	
104	0314 0060W	Philips Pan Head Screw - M4x6	
105	0741 3506	Ball Bearing - 6x12x4 mm	
106	0632 0080E	Spring Pin - 2 X 8mm	
107	0720 0030E	Retaining Ring - M3	
108	0720 0040E	Retaining Ring - M4	
109	0951 4008W	Philips Screw With Flat Washer-M4x8	
110	0951 3006W	Philips Screw With Flat Washer-M3x6	
111	0951 4006W	Philips Screw With Flat Washer-M4x6	
112	0965 4006W	Tapping Screw - M4x6	

4. FEED-OUT SECTION (A607)

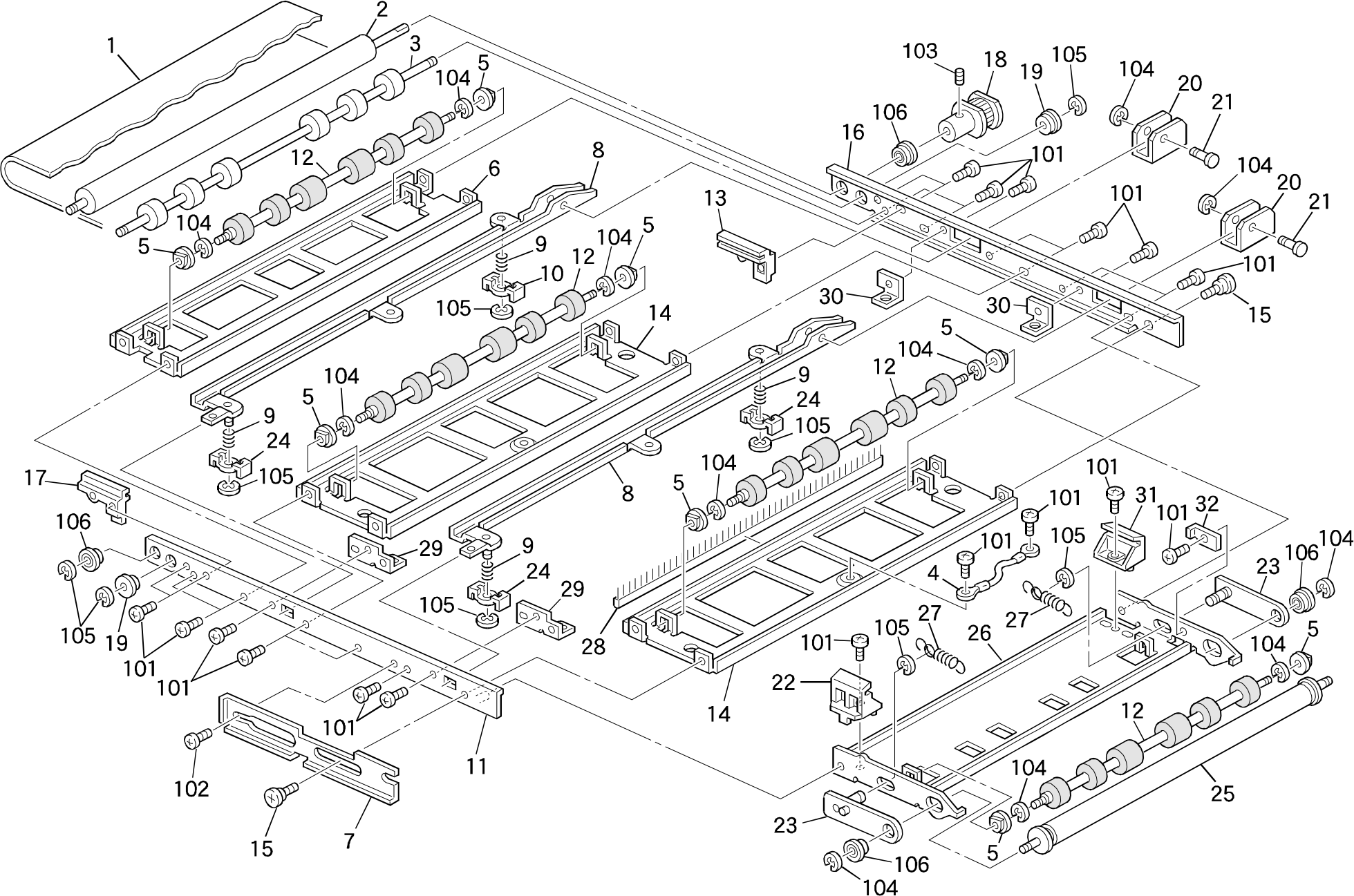


4. FEED-OUT SECTION (A607)

Index No.	Part No.	Description	Qty Per Assembly
1	A499 1272	Upper Feed Out Guide	1
2	A499 1274	Registor Sensor Bracket	1
3	AW01 0066	Photosensor - PS-R50D1-B	2
4	A607 3142	Switch Bracket	1
5	A499 1379	Sensor Pad	1
6	A607 5608	Relay Harness	1
7	A607 5602	Registration Sensor Harness	1
8	A499 1371	Pulse Generator Bracket	1
9	AW02 0075	Photointerrupter	2
10	A499 1378	Stepped Screw - M4x6	1
11	A499 1375	Pulse Generator	1
12	AA06 3151	Inner Pressure Spring	2
13	AB01 0051	Gear - 26Z	1
14	A499 1358	Lower Feed Out Guide	1
15	A499 1351	Original Feed Out Stay	1
16	A378 1355	Idle Roller	1
17	A499 1356	Sensor Pad Plate	1
18	5875 2067	Bushing	1
19	A499 1361	Bracket - Idle Roller Arm	4
20	A378 1397	Idle Roller Arm - 4pcs/set	4
21	AA06 3152	Outer Pressure Spring	2
22	5446 2824	Screw - Duplex Guide Plate	2
23	A499 1275	Grouding Plate	1
24	AA12 0032	Autistatic Brush	1

Index No.	Part No.	Description	Qty Per Assembly
101	0314 0060W	Philips Pan Head Screw - M4x6	
102	0951 4006W	Philips Screw With Flat Washer-M4x6	
103	0720 0030E	Retaining Ring - M3	
104	1105 0005	Nylon Clamp - 3N	
105	0951 3010W	PhilipsScrew With Flat Washer-M3x10	

5. TRANSPORT SECTION (A607)

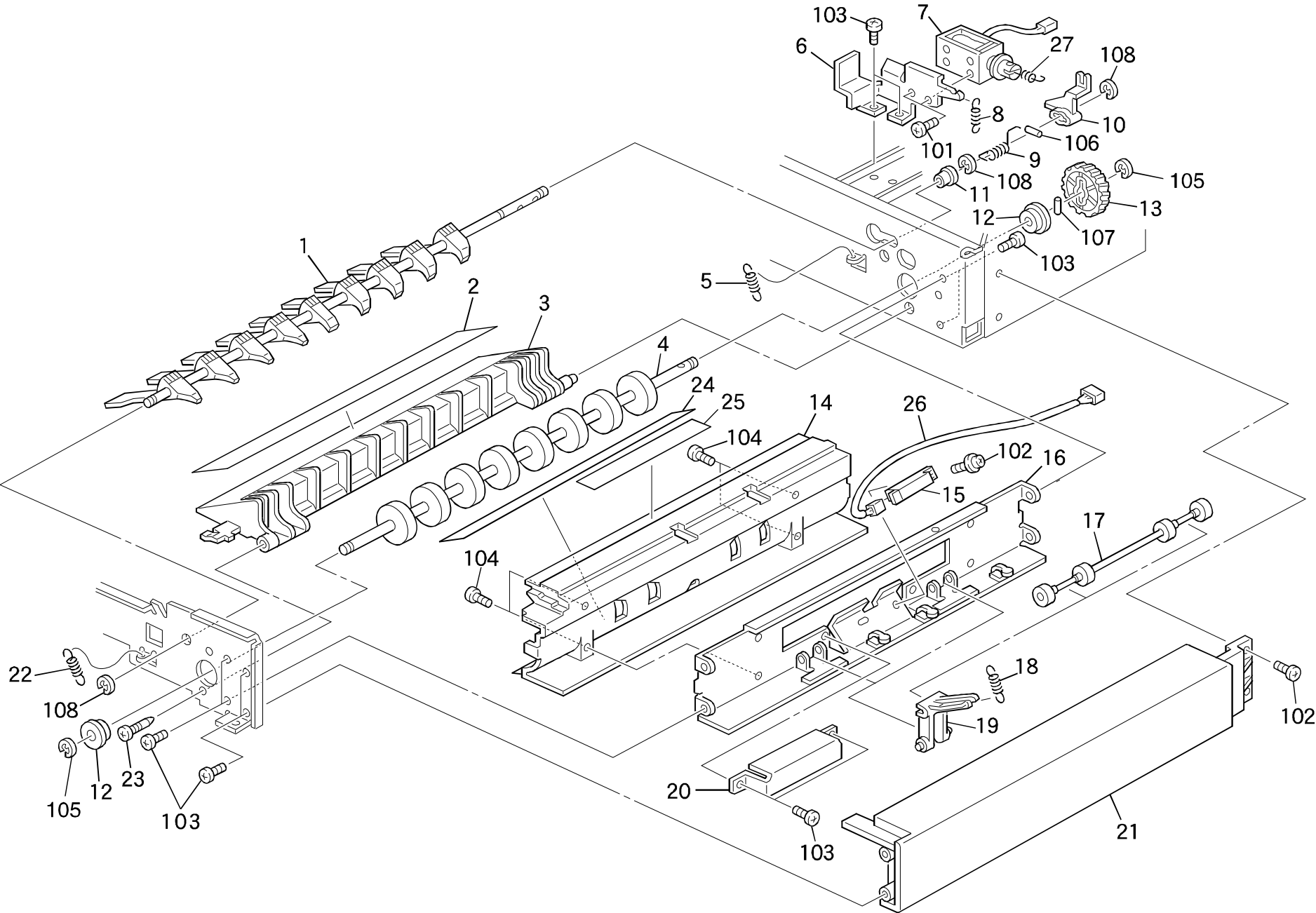


5. TRANSPORT SECTION (A607)

Index No.	Part No.	Description	Q ty Per Assembly
1	A497 1125	Transport Belt	1
2	A378 1562	Drive Roller	1
3	AF02 0163	Belt Pressure Roller	1
4	A499 5707	Grouding Wire	1
5	A378 1616	Pressure Roller Bushing	8
6	A499 1531	Left Stay	1
7	A499 1581	Support Plate - Release Bracket	1
8	A499 1545	Belt Unit Arm	2
9	AA06 3153	Pressure Spring	4
10	A499 1552	Bushing - 6M	1
11	A499 1511	Front Frame - Transport Belt	1
12	A378 1564	Belt Pressure Roller	4
13	A378 1537	Belt Guide - Rear Left	1
14	A499 1532	Middle Stay	2
15	AA14 3062	Shoulder Screw - M4	2
16	A499 1520	Rear Frame - Transport Belt	1
17	A499 1536	Belt Guide - Front Left	1
18	A378 1555	Pulley - 21Z	1
19	A422 1078	Bushing - 6x12x4mm	2
20	A499 1542	Belt Unit Hinge	2
21	A499 1556	Pin - 4x16	2
22	A499 1576	Right Belt Guide	1
23	A499 1571	Tension Plate	2
24	A499 1551	Bushing - 6M	3
25	A378 1563	Drive Roller	1
26	A378 1561	Belt Release Bracket	1
27	AA06 0286	Tension Spring	2
28	AA12 0032	Antistatic Brush	1
29	A499 1513	Front Pressure Plate	2
30	A499 1523	Rear Pressure Plate	2
31	A378 1577	Right Belt Guide	1
32	A378 1566	Tension Plate	1

Index No.	Part No.	Description	Q ty Per Assembly
101	0314 0060W	Philips Pan Head Screw - M4x6	
102	0344 0060F	Philips Truss Head Screw - M4x6	
103	0574 0040E	Hexagon Headless Set Screw - M4x4	
104	0720 0030E	Retaining Ring - M3	
105	0720 0040E	Retaining Ring - M4	
106	0741 3506	Ball Bearing - 6x12x4 mm	

6. INVERTOR SECTION (A607)

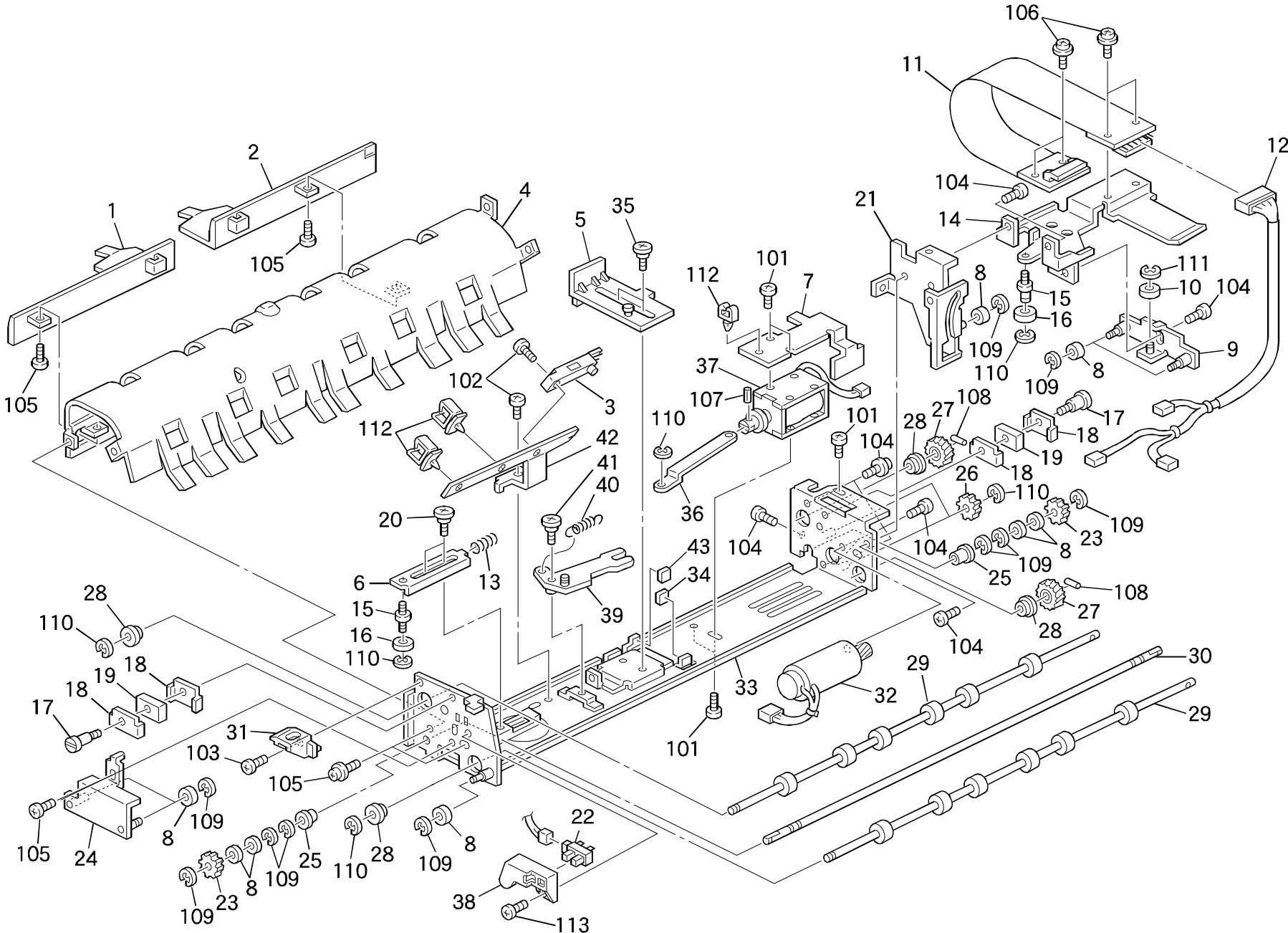


6. INVERTOR SECTION (A607)

Index No.	Part No.	Description	Q ty Per Assembly
1	A499 1751	Invertorpawls	1
2	A499 1712	Paper Guide Mylar	1
3	A499 1711	Invertor Guide Plate	1
4	AF02 0164	Invertor Roller	1
5	AA06 0280	Spring - Invertor Guide	1
6	A607 1761	Invertor Solenoid Bracket	1
7	AX11 0056	DC Solenoid - 24V	1
8	AA06 0287	Spring - Invertor Lever	1
9	AA06 6054	Spring	1
10	A378 1752	Inverter Pawls	1
11	H014 3107	Bushing - M5	1
12	A422 1079	Bushing - 8x16x5mm	2
13	AB01 1098	Gear - 35Z	1
14	A607 1721	Invertor Guide	1
15	AW01 0066	Photosensor - PS-R50D1-B	1
16	A499 1735	Invertor Stay	1
17	AF02 2046	Idle Roller	2
18	AA06 0282	Pressure Spring	2
19	A499 1731	Idle Roller Arm	2
20	A378 1728	Inverter Sensor Bracket	1
21	A607 3551	Cover - Right - Ric	1
22	AA06 0343	Spring - Front Inverter Guide	1
23	5446 2824	Screw - Duplex Guide Plate	1
24	A378 1729	Paper Guide Mylar	1
25	A499 1746	Mylar - 128x18	1
26	A607 5600	Invertor Sensor Harness	1
27	AA06 0283	Spring - Invertor Solenoid	1

Index No.	Part No.	Description	Q ty Per Assembly
101	0313 0040W	Philips Pan Head Screw - M3x4	
102	0354 0060D	Sunk Screw - 4x6	
103	0314 0060W	Philips Pan Head Screw - M4x6	
104	0354 0080W	Philips Pan Head Screw - M4x8	
105	0720 0060E	Retaining Ring - M6	
106	0632 0100E	Pin - M2x10	
107	0632 0140E	Parallel Pin - M2x14	
108	0720 0040E	Retaining Ring - M4	

7. EXIT SECTION 1 (A607)

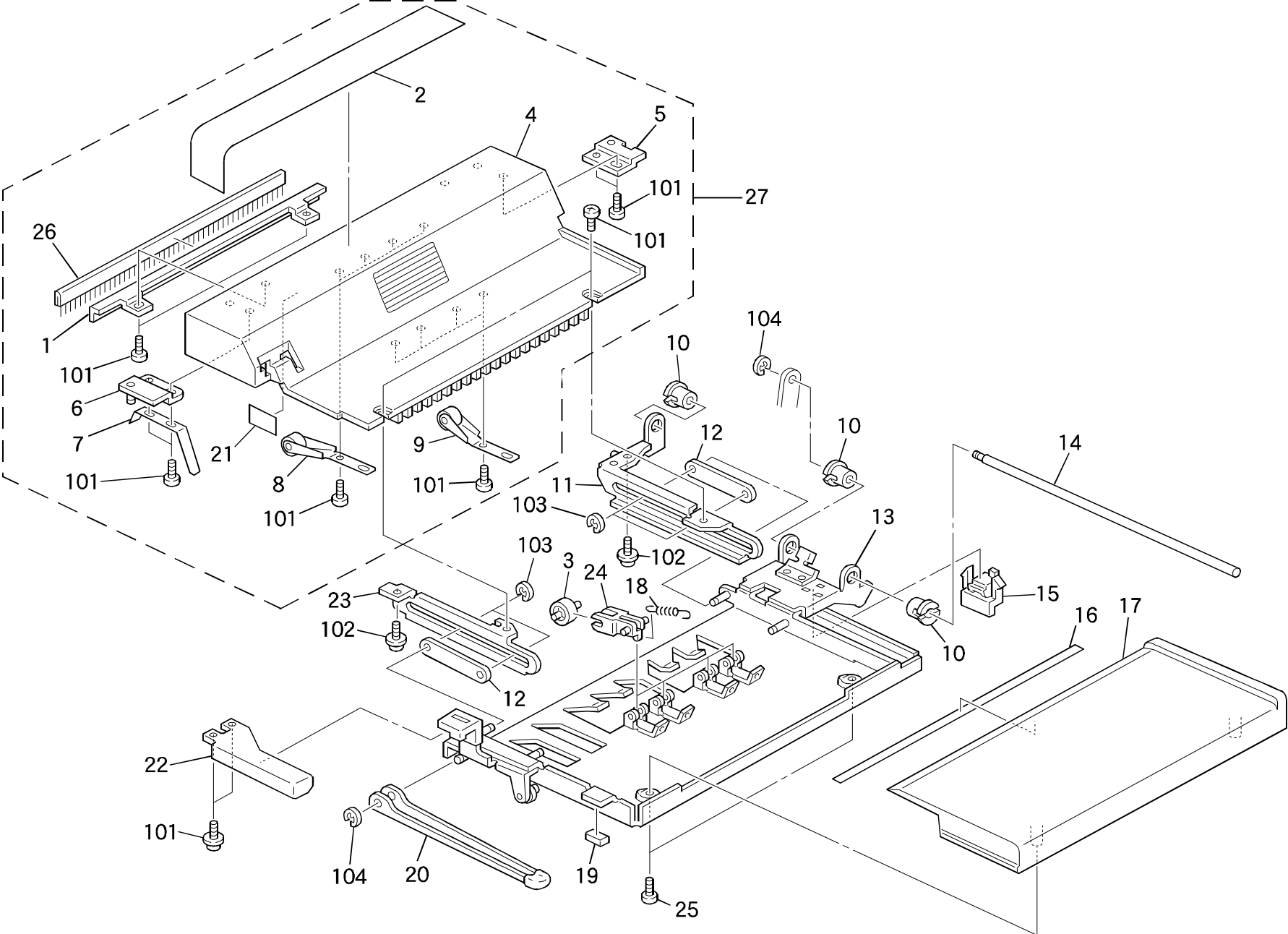


7. EXIT SECTION 1 (A607)


Index No.	Part No.	Description	Qty Per Assembly
1	A607 2201	Front End Fence	1
2	A607 2211	Rear End Fence	1
3	AW01 0066	Photosensor - PS-R50D1-B	1
4	A378 2198	Exit Guide Plate	1
5	A607 2131	End Fence - Center	1
6	A499 2121	Slider Lock	1
7	A499 2246	Harness Cover	1
8	A499 2181	Fixing Roller	10
9	A499 2161	Rear Fixing Plate	1
10	A454 1172	Collar - M6	1
11	A607 5510	Stapler Harnss - 1	1
12	A607 5601	Exit Harness	1
13	AA06 3154	Spring - Lock	1
14	A378 2166	Harness Bracket	1
15	AA14 3282	Stud - M4	2
16	A378 2184	Locking Roller	2
17	AA14 3284	Stepped Screw - M3x11	2
18	A499 2177	Magnet Holder	4
19	A607 2176	Exit Cover Magnet	2
20	AA14 0060	Stepped Screw - M3x5	2
21	A378 2155	Guide Bracket	1
22	AW02 0075	Photointerrupter	1
23	A499 2189	Gear - 28Z	2
24	A607 2151	Front Fixing Plate	1
25	AA08 0004	Bushing - 4x6x5	2
26	A378 2133	Gear - 30Z	2
27	A378 2132	Gear - 31Z	2
28	A422 1078	Bushing - 6x12x4mm	4
29	AF02 0165	Exit Roller	2
30	A499 2191	Slider Pinion Shaft	1
31	A499 2241	Positioning Holder	1
32	AX05 0096	Motor - DC 9W	1
33	A607 2111	Exit Frame	1
34	A607 2118	Rear Cushion	1
35	H006 2171	Stepped Screw	2

Index No.	Part No.	Description	Qty Per Assembly
36	A499 2141	End Fence Link	1
37	AX12 0046	DC Solenoid - 24V	1
38	A607 2141	Misfeed Sensor Cover	1
39	A499 2142	End Fence Lever	1
40	AA06 0284	Spring - Pick-up	1
41	AA14 0065	Stepped Screw - M3x6	1
42	A607 2146	Exit Sensor Bracket	1
43	A607 2119	Front Cushion	1
101	0313 0040W	Philips Pan Head Screw - M3x4	
102	0313 0060W	Philips Pan Head Screw - M3x6	
103	0313 0160W	Philips Pan Head Screw - M3x16	
104	0314 0040W	Philips Pan Head Screw - M4x4	
105	0314 0060W	Philips Pan Head Screw - M4x6	
106	0344 0060W	Philips Truss Head Screw - M4x6	
107	0623 0100E	Spring Pin - 3x10mm	
108	0632 0120E	Spring Pin - 2 X 12mm	
109	0720 0025E	Retaining Ring - M2.5	
110	0720 0030E	Retaining Ring - M3	
111	0720 0040E	Retaining Ring - M4	
112	1105 0319	Harness Clamp	
113	0354 0060D	Sunk Screw - 4x6	

8. EXIT SECTION 2 (A607)

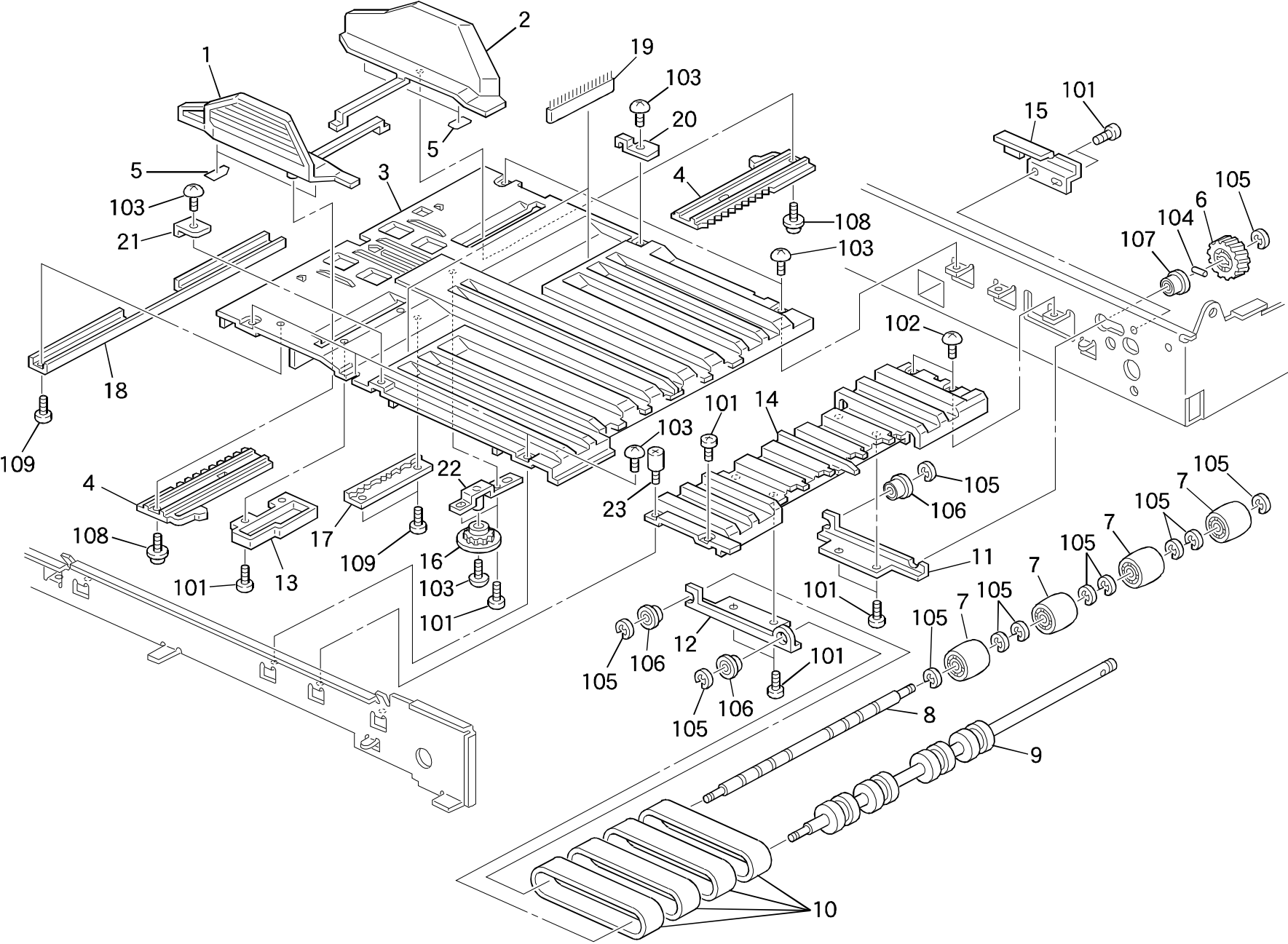


8. EXIT SECTION 2 (A607)

Index No.	Part No.	Description	Qty Per Assembly
1	A499 2338	Antistatic Brash Plate	1
2	A607 6056	Decal - Original Set	1
3	A499 2444	Middle Belt Roller	4
4	A607 2301	Cover - Exit - Ric	1
5	A499 2317	Rear Positioning Plate	1
6	A607 2313	Front Positioning Plate	1
7	A499 2341	Exit Grouding Plate	1
8	A499 2328	Exit Guide Roller - Left	4
9	A499 2323	Exit Guide Roller - Right	4
10	A378 2377	Bushing	3
11	A378 2331	Rear Slide Plate	1
12	A378 2388	Front Spacer	2
13	A378 2351	Middle Guide Plate	1
14	A378 2378	Slide Guide Shaft	1
15	A378 2392	Rear Spacer	1
16	A499 3606	Seal	1
17	A607 3571	Slide Cover	1
18	AA06 0259	Spring - Middle Roller	4
19	5215 3072	Side Magnet	1
20	A378 2371	Slider Lock Arm	1
21	A499 2639	Exit Sensor Seal - 20 x 13	1
22	A607 3651	Slide Grip	1
23	A378 2346	Plate	1
24	A499 2445	Holder - Middle Belt Roller	4
25	5875 2088	Shoulder Screw - M4	2
26	AA12 0032	Antistatic Brush	1
27	A607 2630	Exit Cover	1
			

Index No.	Part No.	Description	Qty Per Assembly
101	0314 0060W	Philips Pan Head Screw - M4x6	
102	0951 4006W	Philips Screw With Flat Washer-M4x6	
103	0720 0030E	Retaining Ring - M3	
104	0720 0040E	Retaining Ring - M4	

9. ORIGINAL TABLE (A607)

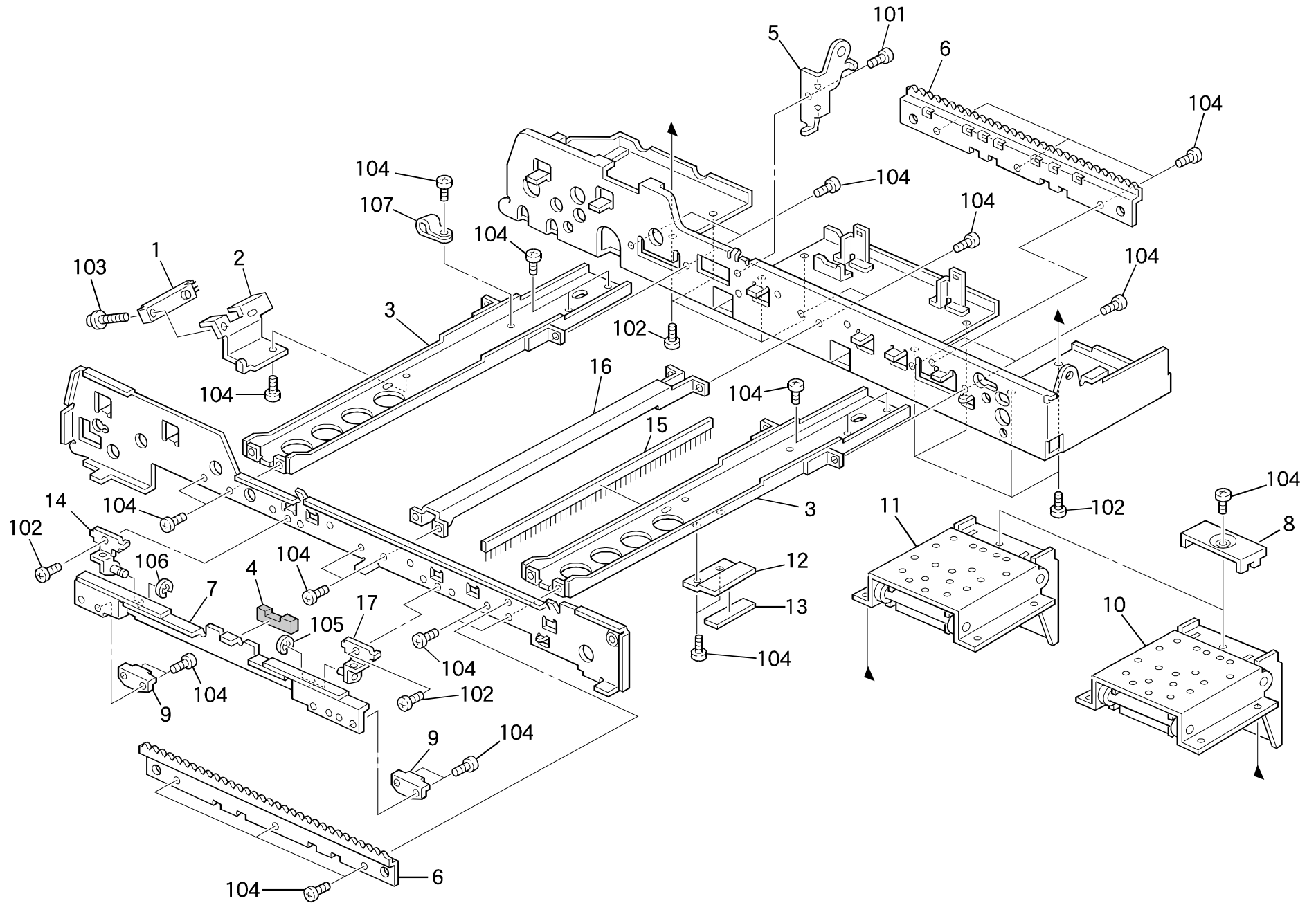


9. ORIGINAL TABLE (A607)

Index No.	Part No.	Description	Qty Per Assembly
1	A607 1471	Front Side Fence	1
2	A607 1481	Rear Side Fence	1
3	A607 1401	Original Table	1
4	A499 1237	Side Fence Gear	2
5	A499 1246	Guide Seal - 1x8x16mm	4
6	AB01 1099	Gear - 20Z	1
7	A499 2427	Idle Roller	4
8	A499 2426	Idle Roller Shaft	1
9	AF02 0166	Belt Drive Roller - Right Table	1
10	A499 9501	Transport Belt-Right Table-4pcs/set	1
11	A499 2422	Rear Stay - Right Table	1
12	A499 2421	Front Stay - Right Table	1
13	A499 1242	Original Table Cop	1
14	A607 2411	Right Table	1
15	A378 2195	Rear Stopper	1
16	A499 1239	Gear - 20Z	1
17	A499 1268	Side Fence Guide Rail	1
18	A499 1236	Original Table Support Plate	1
19	AA12 0045	Antistatic Brush	2
20	A499 1278	Front Grounding Plate	1
21	A499 1279	Rear Grounding Plate	1
22	A499 1247	Side Fence Guide Bracket	1
23	A378 3611	Stopper Screw	1

Index No.	Part No.	Description	Qty Per Assembly
101	0314 0060W	Philips Pan Head Screw - M4x6	
102	0344 0060F	Philips Truss Head Screw - M4x6	
103	0344 0060W	Philips Truss Head Screw - M4x6	
104	0632 0120E	Spring Pin - 2 X 12mm	
105	0720 0040E	Retaining Ring - M4	
106	0741 3505	Ball Bearing - 5x10x4	
107	0741 3506	Ball Bearing - 6x12x4 mm	
108	0951 3006W	Philips Screw With Flat Washer-M3x6	
109	0951 4006W	Philips Screw With Flat Washer-M4x6	

10. FRAME SECTION (A607)

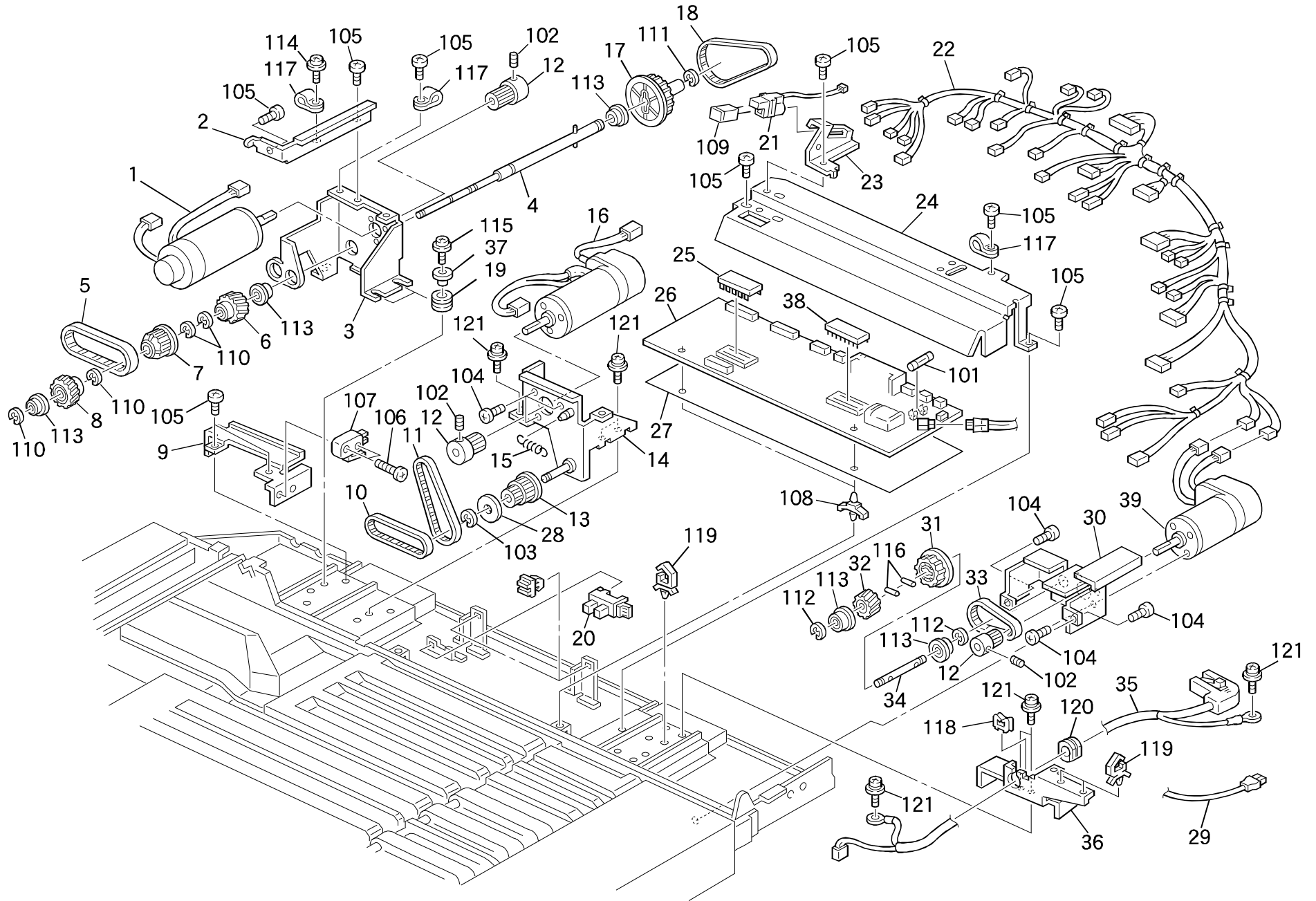


10. FRAME SECTION (A607)

Index No.	Part No.	Description	Qty Per Assembly
1	AW01 0070	Photosebsor - PS-R11D1-B	1
2	A499 1277	Original Set Sensor Bracket	1
3	A499 3135	Right Stay	2
4	A499 3631	Cushion - Magnet Catch	1
5	A378 2387	Left Hinge	1
6	A499 2194	Slider Rack	2
7	A499 3635	Magnet Catch Stay	1
8	A499 4125	Hinge Stopper	2
9	5936 2480	Magnet Catch Ass y	2
10	A499 3186	Right Hinge	1
11	A499 3171	Left Hinge	1
12	A499 1771	Stopper Plate	1
13	A499 1772	Cushion - 44x10x3	1
14	A499 3611	Left Magnet Catch Hinge	1
15	AA12 0032	Antistatic Brush	1
16	A499 1245	Table Support Bracket	1
17	A499 3616	Right Magnet Catch Hinge	1

Index No.	Part No.	Description	Qty Per Assembly
101	0313 0040W	Philips Pan Head Screw - M3x4	
102	0313 0060W	Philips Pan Head Screw - M3x6	
103	0951 3010W	PhilipsScrew With Flat Washer-M3x10	
104	0314 0060W	Philips Pan Head Screw - M4x6	
105	0720 0025E	Retaining Ring - M2.5	
106	0720 0030E	Retaining Ring - M3	
107	1105 0062	Nylon Clamp - 6N	

11. ELECTRICAL SECTION (A607)



11. ELECTRICAL SECTION (A607)

Index No.	Part No.	Description	Qty Per Assembly
1	AX06 0091	DC Motor - 19W	1
2	A499 1451	Motor Support Bracket	1
3	A607 1422	Feed Motor Bracket	1
4	A607 1215	Separator Drive Shaft	1
5	A607 1423	Timing Belt - S2M84	1
6	A607 1094	Gear - 20Z	1
7	A607 1098	Pulley - 30Z	1
8	A607 1092	Gear - 20Z	1
9	A499 3152	Switch Bracket	1
10	A378 1836	Timing Belt - 234XL	1
11	A378 1837	Timing Belt - 144XL	1
12	A378 1095	Pulley - 18Z	3
13	A378 1831	Pulley - 30Z/16Z	1
14	A378 1821	Transport Motor Bracket	1
15	A378 1839	Spring	1
16	AX06 0121	DC Motor - 27W	1
17	A378 1087	Pulley - 62Z	1
18	A378 1086	Timing Belt 160XL	1
19	A376 4132	Cushion - T1	6
20	5216 5245	Photointerruptor - LL-G-3P-S3T2-E	1
21	A607 5607	LED Harness	1
22	A607 5605	Main Harness	1
23	A607 3166	Indicator Bracket	1
24	A499 3156	Main Board Cover	1
25	A607 5810	IC - UVEPROM 256KX8 120NS	1
26	A607 5500	Main Control Board	1
27	A499 3167	Board Protect Sheet	1
28	A378 1833	Flange - 5Z	1
29	AW03 0032	Optical Fiber	1
30	A378 1851	Inverter Motor Bracket	1
31	A607 1856	Pulley - 34Z	1
32	A378 1857	Gear - 24Z	1
33	A607 1859	Timing Belt - S2M118	1
34	A378 1858	Reverse Roller Drive Shaft	1
35	A376 5755	Interface Harness	1

Index No.	Part No.	Description	Qty Per Assembly
36	A378 3161	Right Support Bracket	1
37	A376 4137	Cushion Collar	3
38	A610 5560	IC - HT7410X	1
39	AX06 0082	Belt Drive Motor - DC19W	1
101	1107 0459	Fuse - 5A 250V	
102	0574 0040E	Hexagon Headless Set Screw - M4x4	
103	0720 0030E	Retaining Ring - M3	
104	0313 0040W	Philips Pan Head Screw - M3x4	
105	0314 0060W	Philips Pan Head Screw - M4x6	
106	0313 0160W	Philips Pan Head Screw - M3x16	
107	1204 2188	Interlock Switch	
108	1105 0326	Locking Support	
109	1105 0192	Locking Support	
110	0720 0050E	Retaining Ring - M5	
111	0720 0070E	Retaining Ring - M7	
112	0720 0040E	Retaining Ring - M4	
113	0741 3506	Ball Bearing - 6x12x4 mm	
114	0951 3006W	Philips Screw With Flat Washer-M3x6	
115	0951 4012B	Philips Screw With Flat Washer	
116	0632 0100E	Pin - M2x10	
117	1105 0008	Nylon Clamp - 2N	
118	1105 0328	Harness Clamp - ES-0505	
119	1105 0310	Wire Clamp	
120	1106 0289	Bushing - SR-5N-1	
121	0957 4008B	Philips Screw W/F Washer - M4x8	
122	1204 1433	Microswitch	

12. MAIN CONTROL BOARD (A607)

CAPACITOR

SYMBOL NO.	INDEX NO.	SYMBOL NO.	INDEX NO.	SYMBOL NO.	INDEX NO.	SYMBOL NO.	INDEX NO.	SYMBOL NO.	INDEX NO.	SYMBOL NO.	INDEX NO.	SYMBOL NO.	INDEX NO.
C100	191	C110	190	C120	194	C130	193	C140	193	C150	193	C160	193
C101	191	C111	194	C121	193	C131	193	C141	193	C151	193	C161	193
C102	188	C112	194	C122	193	C132	193	C142	193	C152	----	C162	193
C103	189	C113	194	C123	193	C133	193	C143	193	C153	----	C163	193
C104	----	C114	194	C124	193	C134	193	C144	193	C154	----	C164	193
C105	190	C115	194	C125	193	C135	190	C145	193	C155	193	C165	----
C106	190	C116	194	C126	193	C136	193	C146	193	C156	193	C166	193
C107	189	C117	194	C127	193	C137	193	C147	193	C157	----	C167	193
C108	190	C118	194	C128	193	C138	193	C148	193	C158	193	C168	193
C109	196	C119	194	C129	193	C139	193	C149	193	C159	193	C169	193

CAPACITOR

SYMBOL NO.	INDEX NO.	SYMBOL NO.	INDEX NO.	SYMBOL NO.	INDEX NO.	SYMBOL NO.	INDEX NO.
C170	193	C188	----	C198	----	C208	183
C179	193	C189	----	C199	----	C209	----
C180	193	C190	159	C200	185	C210	183
C181	193	C191	159	C201	185	C211	187
C182	193	C192	160	C202	186	C212	187
C183	193	C193	192	C203	184	C213	193
C184	196	C194	192	C204	184	C214	193
C185	193	C195	193	C205	158	C215	193
C186	----	C196	193	C206	183	C216	193
C187	----	C197	193	C207	183	C217	----

CONNECTOR

SYMBOL NO.	INDEX NO.	SYMBOL NO.	INDEX NO.
C218	----	CN 0	113
C219	----	CN100	102
C220	195	CN101	114
C221	195	CN102	115
C222	195	CN103	110
		CN104	104
		CN105	111
		CN106	108
		CN107	103
		CN108	109
		CN109	106
		CN110	107
		CN113	105
		CN114	112

12. MAIN CONTROL BOARD (A607)

DIODE

SYMBOL NO.	INDEX NO.
D100	129
D101	129
D102	131
D103	129
D104	131
D105	131

DPS

SYMBOL NO.	INDEX NO.
DPS101	119
DPS102	119

FUSE

SYMBOL NO.	INDEX NO.
FU101	117
(FU101)	120

IC

SYMBOL NO.	INDEX NO.
IC100	136
IC101	136
IC102	138
IC103	138
IC106	139
IC107	139
IC110	134
IC111	142
IC112	145
IC113	145

SYMBOL NO.	INDEX NO.
IC114	145
IC115	149
IC116	146
IC117	140
IC118	133
IC119	141
IC120	1
(IC120)	116
IC121	137
IC122	147

SYMBOL NO.	INDEX NO.
IC123	135
IC124	2
IC127	148
IC128	148
IC129	148
IC131	127
(IC131)	197
IC132	127
IC133	144

JP

SYMBOL NO.	INDEX NO.
JP104	182
JP105	182
JP106	182

LED

SYMBOL NO.	INDEX NO.
LED101	130
LED102	130

PC

SYMBOL NO.	INDEX NO.
PC 1	132

Q

SYMBOL NO.	INDEX NO.
Q100	125
Q101	125
Q102	121
Q103	121
Q104	121
Q105	121
Q106	121
Q107	121
Q108	121
Q114	122

SYMBOL NO.	INDEX NO.
Q115	122
Q116	122
Q117	124
Q118	126
Q119	128
Q120	128
Q121	123
Q122	123
Q123	125
Q124	125

RESISTOR

SYMBOL NO.	INDEX NO.
R100	170
R101	170
R102	171
R103	171
R104	171
R105	171
R106	171
R107	171
R108	171
R109	171

SYMBOL NO.	INDEX NO.
R110	171
R111	171
R112	171
R113	171
R114	171
R115	171
R116	171
R117	171
R118	171
R119	171

SYMBOL NO.	INDEX NO.
R120	171
R121	171
R122	171
R123	171
R124	171
R125	171
R126	171
R127	171
R128	171
R129	171

12. MAIN CONTROL BOARD (A607)

RESISTOR

SYMBOL NO.	INDEX NO.	SYMBOL NO.	INDEX NO.	SYMBOL NO.	INDEX NO.	SYMBOL NO.	INDEX NO.	SYMBOL NO.	INDEX NO.	SYMBOL NO.	INDEX NO.	SYMBOL NO.	INDEX NO.
R130	164	R140	175	R162	172	R172	163	R182	163	R192	163	R202	163
R131	164	R141	175	R163	172	R173	163	R183	163	R193	163	R203	163
R132	164	R142	175	R164	172	R174	163	R184	163	R194	163	R204	163
R133	164	R143	175	R165	172	R175	163	R185	163	R195	163	R205	163
R134	174	R144	175	R166	172	R176	163	R186	163	R196	163	R206	163
R135	174	R157	172	R167	172	R177	163	R187	163	R197	163	R207	163
R136	175	R158	172	R168	172	R178	163	R188	163	R198	163	R208	163
R137	175	R159	172	R169	172	R179	163	R189	163	R199	163	R209	163
R138	175	R160	172	R170	172	R180	163	R190	163	R200	163	R210	163
R139	175	R161	172	R171	163	R181	163	R191	163	R201	163	R211	163

RESISTOR

SYMBOL NO.	INDEX NO.	SYMBOL NO.	INDEX NO.	SYMBOL NO.	INDEX NO.	SYMBOL NO.	INDEX NO.	SYMBOL NO.	INDEX NO.	SYMBOL NO.	INDEX NO.	SYMBOL NO.	INDEX NO.
R212	163	R222	163	R239	172	R249	161	R259	169	R275	179	R293	162
R213	163	R223	163	R240	172	R250	161	R260	169	R276	179	R294	162
R214	163	R224	163	R241	172	R251	161	R266	166	R278	176	R295	162
R215	163	R230	163	R242	172	R252	161	R267	166	R280	173	R296	162
R216	163	R231	163	R243	172	R253	161	R268	166	R281	181	R300	165
R217	163	R232	163	R244	161	R254	161	R269	166	R282	180	R301	154
R218	163	R233	163	R245	161	R255	161	R270	163	R283	177	R302	151
R219	163	R234	172	R246	161	R256	161	R271	167	R290	168	R303	153
R220	163	R235	172	R247	161	R257	161	R272	171	R291	162	R304	152
R221	163	R236	172	R248	161	R258	161	R274	179	R292	162	R306	155

RESISTOR

SYMBOL NO.	INDEX NO.
R307	175
R308	175
R309	169
R310	175
R311	175
R312	175
R313	175
R314	175
R315	175
R316	175

SYMBOL NO.	INDEX NO.
R317	175
R318	175
R319	175
R320	175
R321	175
R322	175
R323	175
R330	169
R331	169
R332	169

SW

SYMBOL NO.	INDEX NO.
SW101	118

TP

SYMBOL NO.	INDEX NO.
TP 1	101

VR

SYMBOL NO.	INDEX NO.
VR101	157
VR102	157
VR104	157
VR105	157
VR107	156
VR108	156
VR109	156

XTL

SYMBOL NO.	INDEX NO.
XTL 1	150

12. MAIN CONTROL BOARD (A607)

Index No.	Part No.	Description	Qty Per Assembly
*	A607 5500	Main Control Board	1
1	A607 5810	IC - UVEPROM 256KX8 120NS	1
2	A610 5560	IC - HT7410X	1

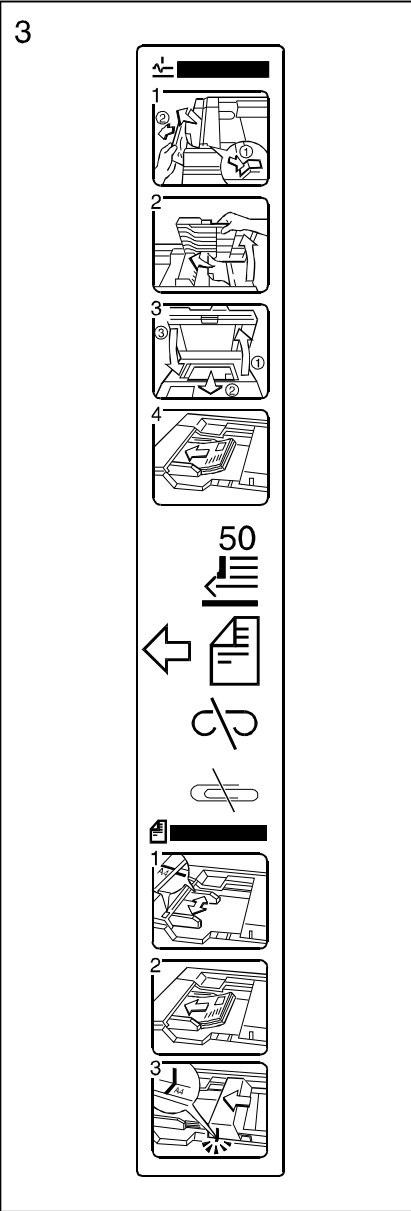
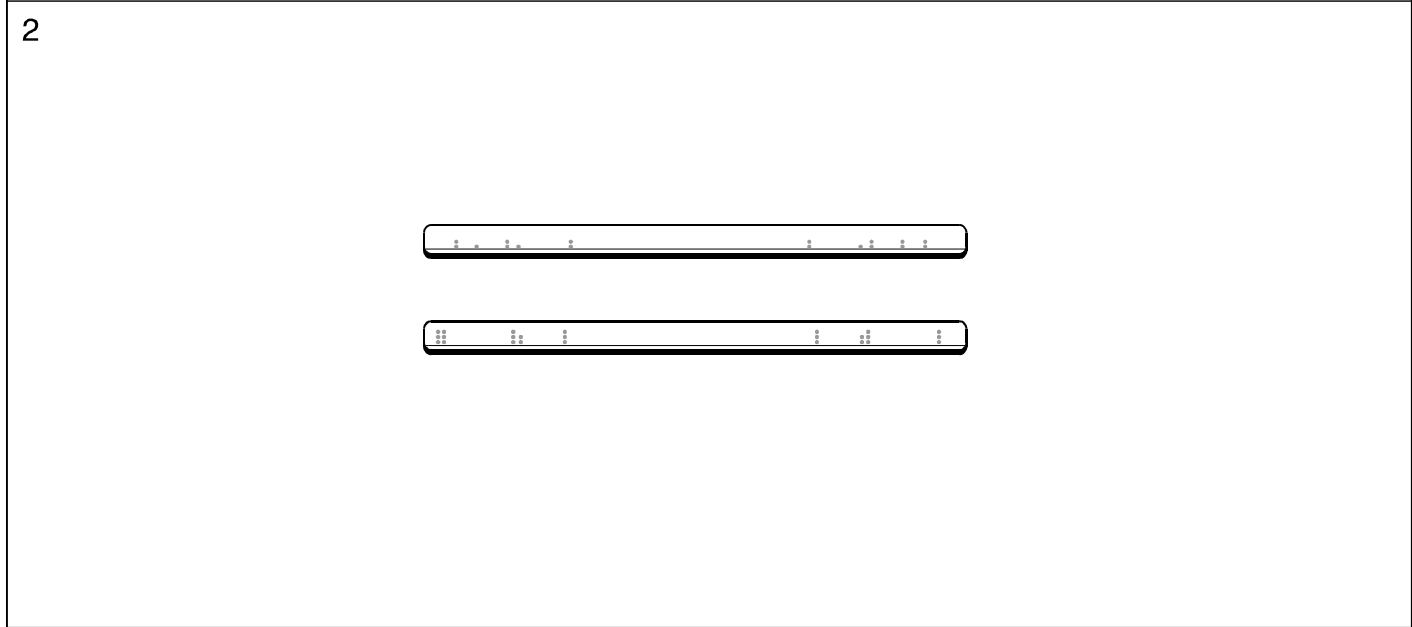
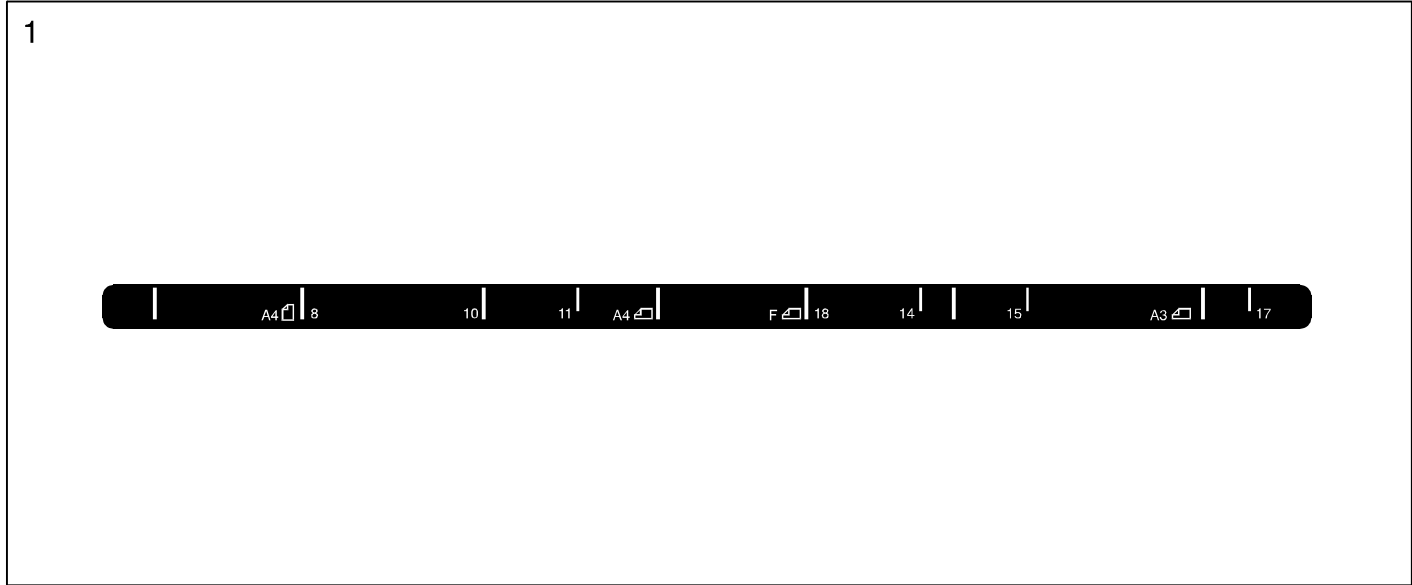


Index No.	Part No.	Description	Qty Per Assembly
101	1101 0328	Connector - Pin Contact	
102	1102 1048	Pin Housing - Mate-N-Lock - 3P	
103	1102 4201	Connector - 2P	
104	1102 4203	CT Header - 4P	
105	1102 4204	CT Header - 5P	
106	1102 4208	Connector - 9P	
107	1102 4209	CT Header - 10P	
108	1102 4212	CT Header - 15P	
109	1102 4633	CT Header - 4P	
110	1102 5003	Fiber Connector - DC1002 - 2P	
111	1102 5007	CT Header - 14P	
112	1103 1493	Connector	
113	1103 1737	Connector - 15P	
114	1103 1774	Pin Header - 8P	
115	1103 1778	Pin Header - 12P	
116	1104 0588	Dip Socket - 28P	
117	1107 0459	Fuse - 5A 250V	
118	1204 1385	Push Switch	
119	1204 1422	Dip Switch - 51D-0401	
120	1204 2194	Fuse Holder	
121	1400 0368	Transistor - 2SC3325	
122	1400 0454	Transistor - 2SB710A	
123	1400 0493	Transistor - 2SC3734-B24	
124	1400 0574	TR-2SD874A	
125	1400 0626	Transistor - 2SA1461	
126	1401 0200	Transistor - 2SD633	
127	1401 0919	Mosfet Array - 4AM14	
128	1401 0964	FET-2SJ172	
129	1402 0780	Diode - 200V - 1A - 11ES2	
130	1402 0783	Red LED - G13PR8	
131	1402 1304	Diode - 100V 1A	
132	1403 0519	Photocoupler - TLP621	
133	1407 2054	IC - TD62308F	
134	1407 2218	TTLIC - SN74LS06NS	
135	1407 2746	IC - CXD1095Q	

Index No.	Part No.	Description	Qty Per Assembly
136	1407 3202	IC - 74HC00A	
137	1407 3283	IC - TC74HC373AF	
138	1407 3286	IC - TC74HC04AF	
139	1407 3287	IC - TC74HC393AF	
140	1407 3492	CPU -78C10AGF	
141	1407 3522	IC - TD62304AF	
142	1407 3541	IC - HD74LS26FP	
143	1407 3695	IC - HD74HC93FP	
144	1408 0397	Comparator - NJM2901M	
145	1408 0398	Comparator - NJM2903M	
146	1408 0538	IC - SI8301L	
147	1408 0598	IC - MB3773PF	
148	1408 0599	IC - M51971EP	
149	1408 1007	Regulator - UPC7812AFH	
150	1503 0687	Oscillator - 14.74 MHZ	
151	1600 0218	Resistor 3.3 P 5W	
152	1600 1158	Resistor - 390P 5% 1W	
153	1600 1434	Resistor - 18 P 5W 10%	
154	1600 1683	Resistor - 0.22 P 5% 2W	
155	1600 1730	Resistor - 1K P 5% 1W	
156	1601 8138	Variable Resistor - 30K P 0.75W	
157	1601 8148	Variable Resistor - 20K P 0.5W	
158	1604 1360	Capacitor - 3300nF 10V	
159	1606 1178	Capacitor - 0.01nF 50V	
160	1606 1348	Capacitor - 0.022nF 50V	
161	1630 3101	Resistor - 100P - 1/10W	
162	1630 3102	Resistor - 1KP 1/10W 5%	
163	1630 3103	Resistor - 10KP 1/10W 5%	
164	1630 3105	Resistor - 1M P 5% 1/10W	
165	1630 3121	Resistor - 120 P 5% 1/10w	
166	1630 3152	Resistor - 1.5K P - 1/10W	
167	1630 3153	Resistor - 15K P 5% 1/10W	
168	1630 3159	Resistor - 1.5K P 5% 10W	
169	1630 3200	Resistor - 20 P 5% 1/10W	

Index No.	Part No.	Description	Qty Per Assembly
170	1630 3202	Resistor - 2KP -1/10W	
171	1630 3203	Resistor - 20 P 5% 1/10W	
172	1630 3332	Resistor - 3.3KP 1/10W 5%	
173	1630 3393	Resistor - 39K P 1/10W	
174	1630 3432	Resistor - 4.3K P 5% 1/10W	
175	1630 3472	Resistor - 4.7KP 1/10W 5%	
176	1630 3474	Resistor - 470K P 5% 1/10W	
177	1630 3562	Resistor - 5.6K P 5% 1/10W	
178	1630 3563	Resistor - 56K P 5% 1/10W	
179	1630 3682	Resistor - 6.8KP - 1/10W	
180	1630 3821	Resistor - 820 P 5% 1/10W	
181	1630 3913	Resistor - 91K P 5% 1/10W	
182	1633 0000	Resistor - 0P 1/10W:Jamper Chip	
183	1640 5101	Capacitor - 100nF 20% 50V	
184	1640 5102	Capacitor - 1000nF 20% 50V	
185	1640 5109	Capacitor - 1nF - 20% - 50V	
186	1640 5220	Capacitor - 22nF 20% 50V	
187	1640 5229	Capacitor - 2.2nF 20% 50V	
188	1660 3101	Capacitor - 100PF 50V	
189	1660 3330	Capacitor - 33PF 5% 50V	
190	1660 3331	Capacitor - 330PF 5% 50V	
191	1660 5102	Capacitor - 1000PF 10% 50V	
192	1660 5222	Capacitor - 2200PF 10% 50V	
193	1660 7103	Capacitor - 10000PF 50V	
194	1660 7104	Capacitor - 100000PF 50V	
195	1660 7223	Capacitor - 22000PF +80 -20% 50V	
196	1660 7473	Capacitor - 47000PF +80% -20% 50V	
197	5936 5221	Heat Sink	

13. DECAL AND DOCUMENT (A607)



13. DECAL AND DOCUMENT (A607)

Index No.	Part No.	Description	Qty Per Assembly
1	A607 6011	Decal - Side Fence	1
2	A607 6036	Decal - Exit	1
3	A607 6056	Decal - Original Set	1

Index No.	Part No.	Description	Qty Per Assembly

PARTS INDEX

PM Parts Index

Section Name	Part No.	Description in Service Manual	Description in Parts Catalog	Q ty Per Assembly	Page and Index No
FEED-IN SECTION (A607)	A378 1211	Feed Roller	Separation Roller	1	7- 2
SEPARATION SECTION (A607)	A499 9500	Separation Belt	Separation Belt - 3pcs/set	3	9- 33
TRANSPORT SECTION (A607)	A497 1125	Transport Belts	Transport Belt	1	13- 1

Parts Index

Part No.	Description	Page and Index No.
A607 1026	1st Pick-up Roller	7- 23
A607 1027	2nd Pick-up Roller	7- 15
A607 1092	Gear - 20Z	7- 7
A607 1092	Gear - 20Z	25- 8
A607 1094	Gear - 20Z	25- 6
A607 1098	Pulley - 30Z	25- 7
A607 1099	Feed-out Roller	7- 3
A607 1111	Cover - Paper Feed - Left	9- 1
A607 1215	Separator Drive Shaft	25- 4
A607 1217	Separation Drive Shaft	7- 19
A607 1218	Separation Drive Bracket	7- 25
A607 1219	Timing Belt - S2M126	7- 22
A607 1221	Separation Solenoid	7- 4
A607 1226	Separation Middle Guide	7- 8
A607 1280	Paper Feed Lever	9- 32
A607 1331	Stopper Solenoid Guide	9- 8
A607 1401	Original Table	21- 3
A607 1422	Feed Motor Bracket	25- 3
A607 1423	Timing Belt - S2M84	25- 5
A607 1467	Sensor Bracket	7- 11
A607 1471	Front Side Fence	21- 1
A607 1481	Rear Side Fence	21- 2
A607 1721	Invertor Guide	15- 14
A607 1761	Invertor Solenoid Bracket	15- 6
A607 1856	Pulley - 34Z	25- 31
A607 1859	Timing Belt - S2M118	25- 33
A607 2111	Exit Frame	17- 33
A607 2118	Rear Cushion	17- 34
A607 2119	Front Cushion	17- 43
A607 2131	End Fence - Center	17- 5
A607 2141	Misfeed Sensor Cover	17- 38
A607 2146	Exit Sensor Bracket	17- 42
A607 2151	Front Fixing Plate	17- 24
A607 2176	Exit Cover Magnet	17- 19
A607 2201	Front End Fence	17- 1

Part No.	Description	Page and Index No
A607 2211	Rear End Fence	17- 2
A607 2301	Cover - Exit - Ric	19- 4
A607 2313	Front Positioning Plate	19- 6
A607 2411	Right Table	21- 14
A607 2630	Exit Cover	19- 27
A607 3142	Switch Bracket	11- 4
A607 3166	Indicator Bracket	25- 23
A607 3511	Cover - Rear	5- 4
A607 3516	Cover - Rear Lower	5- 5
A607 3541	Cover - Front	5- 11
A607 3551	Cover - Right - Ric	15- 21
A607 3561	Cover - Paper Feed - Upper	5- 2
A607 3571	Slide Cover	19- 17
A607 3591	Cover - Open And Close	5- 7
A607 3621	Grip - Magnet Catch	5- 9
A607 3651	Slide Grip	19- 22
A607 5500	Main Control Board	25- 26
A607 5500	Main Control Board	29- *
A607 5510	Stapler Harms - 1	17- 11
A607 5600	Invertor Sensor Harness	15- 26
A607 5601	Exit Harness	17- 12
A607 5602	Registration Sensor Harness	11- 7
A607 5603	Original Sensor Harness	9- 13
A607 5605	Main Harness	25- 22
A607 5607	LED Harness	25- 21
A607 5608	Relay Harness	11- 6
A607 5810	IC - UVEPROM 256KX8 120NS	25- 25
A607 5810	IC - UVEPROM 256KX8 120NS	29- 1
A607 6011	Decal - Side Fence	5- 10
A607 6011	Decal - Side Fence	31- 1
A607 6036	Decal - Exit	5- 1
A607 6036	Decal - Exit	31- 2
A607 6056	Decal - Original Set	19- 2
A607 6056	Decal - Original Set	31- 3

Part No.	Description	Page and Index No.
AA06 0259	Spring - Middle Roller	19- 18
AA06 0276	Spring	9- 38
AA06 0277	Release Spring	9- 25
AA06 0278	Release Spring	9- 30
AA06 0279	Pressure Spring	7- 16
AA06 0280	Spring - Invertor Guide	15- 5
AA06 0282	Pressure Spring	15- 18
AA06 0283	Spring - Invertor Solenoid	15- 27
AA06 0284	Spring - Pick-up	17- 40
AA06 0286	Tension Spring	13- 27
AA06 0287	Spring - Invertor Lever	15- 8
AA06 0343	Spring - Front Inverter Guide	15- 22
AA06 3151	Inner Pressure Spring	11- 12
AA06 3152	Outer Pressure Spring	11- 21
AA06 3153	Pressure Spring	13- 9
AA06 3154	Spring - Lock	17- 13
AA06 6054	Spring	15- 9
AA08 0004	Bushing - 4x6x5	17- 25
AA12 0032	Autistatic Brush	11- 24
AA12 0032	Antistatic Brush	13- 28
AA12 0032	Antistatic Brush	19- 26
AA12 0032	Antistatic Brush	23- 15
AA12 0045	Antistatic Brush	21- 19
AA14 0060	Stepped Screw - M3x5	17- 20
AA14 0065	Stepped Screw - M3x6	17- 41
AA14 3062	Shoulder Screw - M4	13- 15
AA14 3282	Stud - M4	17- 15
AA14 3284	Stepped Screw - M3x11	17- 17
AA16 1022	Cushion	9- 16
AB01 0049	Gear - 31Z	9- 6
AB01 0050	Gear - 32Z	9- 34
AB01 0051	Gear - 26Z	11- 13
AB01 1086	Gear - 20Z	7- 6
AB01 1098	Gear - 35Z	15- 13
AB01 1099	Gear - 20Z	21- 6

Part No.	Description	Page and Index No
AF02 0163	Belt Pressure Roller	13- 3
AF02 0164	Invertor Roller	15- 4
AF02 0165	Exit Roller	17- 29
AF02 0166	Belt Drive Roller - Right Table	21- 9
AF02 0167	Drive Roller Separation Belt	9- 39
AF02 2046	Idle Roller	15- 17
AW01 0066	Photosensor - PS-R50D1-B	11- 3
AW01 0066	Photosensor - PS-R50D1-B	15- 15
AW01 0066	Photosensor - PS-R50D1-B	17- 3
AW01 0070	Photosebsor - PS-R11D1-B	9- 19
AW01 0070	Photosebsor - PS-R11D1-B	23- 1
AW02 0075	Photointerrupter	11- 9
AW02 0075	Photointerrupter	17- 22
AW03 0032	Optical Fiber	25- 29
AX05 0096	Motor - DC 9W	17- 32
AX06 0082	Belt Drive Motor - DC19W	25- 39
AX06 0091	DC Motor - 19W	25- 1
AX06 0121	DC Motor - 27W	25- 16
AX11 0056	DC Solenoid - 24V	9- 9
AX11 0056	DC Solenoid - 24V	15- 7
AX12 0046	DC Solenoid - 24V	17- 37
H006 2171	Stepped Screw	9- 21
H006 2171	Stepped Screw	17- 35
H014 3107	Bushing - M5	15- 11

Part No.	Description	Page and Index No.
A376 4132	Cushion - T1	25- 19
A376 4137	Cushion Collar	25- 37
A376 5755	Interface Harness	25- 35
A378 1084	Timing Belt - 192XL	7- 5
A378 1086	Timing Belt 160XL	25- 18
A378 1087	Pulley - 62Z	25- 17
A378 1091	Gear - 32Z	7- 9
A378 1095	Pulley - 18Z	7- 21
A378 1095	Pulley - 18Z	25- 12
A378 1096	Pulley - 24Z	7- 20
A378 1127	Rear Separation Guide	9- 23
A378 1211	Separation Roller	7- 2
A378 1355	Idle Roller	11- 16
A378 1397	Idle Roller Arm - 4pcs/set	11- 20
A378 1537	Belt Guide - Rear Left	13- 13
A378 1555	Pulley - 21Z	13- 18
A378 1561	Belt Release Bracket	13- 26
A378 1562	Drive Roller	13- 2
A378 1563	Drive Roller	13- 25
A378 1564	Belt Pressure Roller	13- 12
A378 1566	Tension Plate	13- 32
A378 1577	Right Belt Guide	13- 31
A378 1616	Pressure Roller Bushing	13- 5
A378 1728	Inverter Sensor Bracket	15- 20
A378 1729	Paper Guide Mylar	15- 24
A378 1752	Inverter Pawls	15- 10
A378 1821	Transport Motor Bracket	25- 14
A378 1831	Pulley - 30Z/16Z	25- 13
A378 1833	Flange - 5Z	25- 28
A378 1836	Timing Belt - 234XL	25- 10
A378 1837	Timing Belt - 144XL	25- 11
A378 1839	Spring	25- 15
A378 1851	Inverter Motor Bracket	25- 30
A378 1857	Gear - 24Z	25- 32
A378 1858	Reverse Roller Drive Shaft	25- 34

Part No.	Description	Page and Index No.
A378 2132	Gear - 31Z	17- 27
A378 2133	Gear - 30Z	17- 26
A378 2155	Guide Bracket	17- 21
A378 2166	Harness Bracket	17- 14
A378 2184	Locking Roller	17- 16
A378 2195	Rear Stopper	21- 15
A378 2198	Exit Guide Plate	17- 4
A378 2331	Rear Slide Plate	19- 11
A378 2346	Plate	19- 23
A378 2351	Middle Guide Plate	19- 13
A378 2371	Slider Lock Arm	19- 20
A378 2377	Bushing	19- 10
A378 2378	Slide Guide Shaft	19- 14
A378 2387	Left Hinge	23- 5
A378 2388	Front Spacer	19- 12
A378 2392	Rear Spacer	19- 15
A378 3133	Seal	7- 24
A378 3161	Right Support Bracket	25- 36
A378 3611	Stopper Screw	21- 23
A378 4111	Sholder Screw - M5	5- 8
A378 4112	Sholder Screw M5	5- 6
A378 4114	Sholder Screw - M4	5- 12
A378 4116	Switch Actuator	5- 13
A422 1078	Bushing - 6x12x4mm	7- 10
A422 1078	Bushing - 6x12x4mm	9- 40
A422 1078	Bushing - 6x12x4mm	13- 19
A422 1078	Bushing - 6x12x4mm	17- 28
A422 1079	Bushing - 8x16x5mm	15- 12
A454 1172	Collar - M6	17- 10
A497 1125	Transport Belt	13- 1
A499 1120	Separation Belt Holder	9- 4
A499 1122	Shaft Holder	9- 41
A499 1123	Left Cover Bracket	9- 14
A499 1126	Separation Guide	9- 3
A499 1129	Shaft - Tensionroller Holder	9- 37

Part No.	Description	Page and Index No.
A499 1131	Tension Roller Holde	9- 35
A499 1135	Tension Roller	9- 36
A499 1153	Grouding Plate	9- 2
A499 1212	Guide Roller	7- 1
A499 1236	Original Table Support Plate	21- 18
A499 1237	Side Fence Gear	21- 4
A499 1239	Gear - 20Z	21- 16
A499 1242	Original Table Cop	21- 13
A499 1245	Table Support Bracket	23- 16
A499 1246	Guide Seal - 1x8x16mm	21- 5
A499 1247	Side Fence Guide Bracket	21- 22
A499 1268	Side Fence Guide Rail	21- 17
A499 1272	Upper Feed Out Guide	11- 1
A499 1274	Registor Sensor Bracket	11- 2
A499 1275	Grouding Plate	11- 23
A499 1277	Original Set Sensor Bracket	23- 2
A499 1278	Front Grounding Plate	21- 20
A499 1279	Rear Grounding Plate	21- 21
A499 1305	Original Entrance Guide	9- 18
A499 1312	Separation Guide Bracket	9- 27
A499 1313	Paper Guide Mylar	9- 28
A499 1315	Original Sensor Bracket	9- 20
A499 1317	Guide Seal	9- 15
A499 1321	Original Stopper Bracket	9- 26
A499 1323	Original Stopper	9- 29
A499 1325	Stud - M4x5	9- 22
A499 1326	Holde - Original Stopper Bracket	9- 5
A499 1332	Stopper Solenoid Lever	9- 10
A499 1335	Stopper	9- 17
A499 1336	Stopper Positioning Plate	9- 24
A499 1341	Release Lever - Separation Unit	9- 31
A499 1351	Original Feed Out Stay	11- 15
A499 1356	Sensor Pad Plate	11- 17
A499 1358	Lower Feed Out Guide	11- 14
A499 1361	Bracket - Idle Roller Arm	11- 19

Part No.	Description	Page and Index No
A499 1371	Pulse Generator Bracket	11- 8
A499 1375	Pulse Generator	11- 11
A499 1378	Stepped Screw - M4x6	11- 10
A499 1379	Sensor Pad	11- 5
A499 1451	Motor Support Bracket	25- 2
A499 1458	Pick-up Roller Cam	7- 18
A499 1461	Cam Lever	7- 14
A499 1465	Bushing - 5M	7- 13
A499 1511	Front Frame - Transport Belt	13- 11
A499 1513	Front Pressure Plate	13- 29
A499 1520	Rear Frame - Transport Belt	13- 16
A499 1523	Rear Pressure Plate	13- 30
A499 1531	Left Stay	13- 6
A499 1532	Middle Stay	13- 14
A499 1536	Belt Guide - Front Left	13- 17
A499 1542	Belt Unit Hinge	13- 20
A499 1545	Belt Unit Arm	13- 8
A499 1551	Bushing - 6M	13- 24
A499 1552	Bushing - 6M	13- 10
A499 1556	Pin - 4x16	13- 21
A499 1571	Tension Plate	13- 23
A499 1576	Right Belt Guide	13- 22
A499 1581	Support Plate - Release Bracket	13- 7
A499 1711	Invertor Guide Plate	15- 3
A499 1712	Paper Guide Mylar	15- 2
A499 1731	Idle Roller Arm	15- 19
A499 1735	Invertor Stay	15- 16
A499 1746	Mylar - 128x18	15- 25
A499 1751	Invertorpawls	15- 1
A499 1771	Stopper Plate	23- 12
A499 1772	Cushion - 44x10x3	23- 13
A499 2121	Slider Lock	17- 6
A499 2141	End Fence Link	17- 36
A499 2142	End Fence Lever	17- 39
A499 2161	Rear Fixing Plate	17- 9

Part No.	Description	Page and Index No.
A499 2177	Magnet Holder	17- 18
A499 2181	Fixing Roller	17- 8
A499 2189	Gear - 28Z	17- 23
A499 2191	Slider Pinion Shaft	17- 30
A499 2194	Slider Rack	23- 6
A499 2241	Positioning Holder	17- 31
A499 2246	Harness Cover	17- 7
A499 2317	Rear Positioning Plate	19- 5
A499 2323	Exit Guide Roller - Right	19- 9
A499 2328	Exit Guide Roller - Left	19- 8
A499 2338	Antistatic Brush Plate	19- 1
A499 2341	Exit Grouding Plate	19- 7
A499 2421	Front Stay - Right Table	21- 12
A499 2422	Rear Stay - Right Table	21- 11
A499 2426	Idle Roller Shaft	21- 8
A499 2427	Idle Roller	21- 7
A499 2444	Middle Belt Roller	19- 3
A499 2445	Holder - Middle Belt Roller	19- 24
A499 2639	Exit Sensor Seal - 20 x 13	19- 21
A499 3135	Right Stay	23- 3
A499 3152	Switch Bracket	25- 9
A499 3156	Main Board Cover	25- 24
A499 3167	Board Protect Sheet	25- 27
A499 3171	Left Hinge	23- 11
A499 3186	Right Hinge	23- 10
A499 3531	Indication Panel	5- 3
A499 3606	Seal	19- 16
A499 3611	Left Magnet Catch Hinge	23- 14
A499 3616	Right Magnet Catch Hinge	23- 17
A499 3631	Cushion - Magnet Catch	23- 4
A499 3635	Magnet Catch Stay	23- 7
A499 4125	Hinge Stopper	23- 8
A499 5707	Grouding Wire	13- 4
A499 9500	Separation Belt - 3pcs/set	9- 33
A499 9501	Transport Belt-Right Table-4pcs/set	21- 10

Part No.	Description	Page and Index No
A610 5560	IC - HT7410X	25- 38
A610 5560	IC - HT7410X	29- 2
5215 3072	Side Magnet	19- 19
5216 5245	Photointerruptor - LL-G-3P-S3T2-E	7- 12
5216 5245	Photointerruptor - LL-G-3P-S3T2-E	25- 20
5403 1910	Spring Anchor - Stopper Lever	9- 12
5415 4145	Stud	9- 11
5446 2824	Screw - Duplex Guide Plate	9- 7
5446 2824	Screw - Duplex Guide Plate	11- 22
5446 2824	Screw - Duplex Guide Plate	15- 23
5447 2681	Snap Ring	9- 42
5875 2067	Bushing	11- 18
5875 2088	Shoulder Screw - M4	19- 25
5936 1145	Position Encoder	7- 17
5936 2480	Magnet Catch Ass y	23- 9
5936 5221	Heat Sink	29-197

Part No.	Description	Page and Index No.
0313 0040W	Philips Pan Head Screw - M3x4	9-101
0313 0040W	Philips Pan Head Screw - M3x4	15-101
0313 0040W	Philips Pan Head Screw - M3x4	17-101
0313 0040W	Philips Pan Head Screw - M3x4	23-101
0313 0040W	Philips Pan Head Screw - M3x4	25-104
0313 0060M	Philips Pan Head Screw - M3x6	9-102
0313 0060W	Philips Pan Head Screw - M3x6	9-103
0313 0060W	Philips Pan Head Screw - M3x6	17-102
0313 0060W	Philips Pan Head Screw - M3x6	23-102
0313 0160W	Philips Pan Head Screw - M3x16	17-103
0313 0160W	Philips Pan Head Screw - M3x16	25-106
0314 0040W	Philips Pan Head Screw - M4x4	17-104
0314 0060W	Philips Pan Head Screw - M4x6	5-101
0314 0060W	Philips Pan Head Screw - M4x6	7-101
0314 0060W	Philips Pan Head Screw - M4x6	9-104
0314 0060W	Philips Pan Head Screw - M4x6	11-101
0314 0060W	Philips Pan Head Screw - M4x6	13-101
0314 0060W	Philips Pan Head Screw - M4x6	15-103
0314 0060W	Philips Pan Head Screw - M4x6	17-105
0314 0060W	Philips Pan Head Screw - M4x6	19-101
0314 0060W	Philips Pan Head Screw - M4x6	21-101
0314 0060W	Philips Pan Head Screw - M4x6	23-104
0314 0060W	Philips Pan Head Screw - M4x6	25-105
0314 0080M	Philips Pan Head Screw - M4x8	5-102
0344 0060F	Philips Truss Head Screw - M4x6	13-102
0344 0060F	Philips Truss Head Screw - M4x6	21-102
0344 0060W	Philips Truss Head Screw - M4x6	17-106
0344 0060W	Philips Truss Head Screw - M4x6	21-103
0354 0060D	Sunk Screw - 4x6	5-103
0354 0060D	Sunk Screw - 4x6	15-102
0354 0060D	Sunk Screw - 4x6	17-113
0354 0080W	Philips Pan Head Screw - M4x8	15-104
0574 0040E	Hexagon Headless Set Screw - M4x4	7-102
0574 0040E	Hexagon Headless Set Screw - M4x4	13-103
0574 0040E	Hexagon Headless Set Screw - M4x4	25-102

Part No.	Description	Page and Index No.
0623 0100E	Spring Pin - 3x10mm	17-107
0632 0080E	Spring Pin - 2 X 8mm	9-106
0632 0100E	Pin - M2x10	7-103
0632 0100E	Pin - M2x10	15-106
0632 0100E	Pin - M2x10	25-116
0632 0120E	Spring Pin - 2 X 12mm	17-108
0632 0120E	Spring Pin - 2 X 12mm	21-104
0632 0140E	Parallel Pin - M2x14	7-105
0632 0140E	Parallel Pin - M2x14	15-107
0720 0025E	Retaining Ring - M2.5	17-109
0720 0025E	Retaining Ring - M2.5	23-105
0720 0030E	Retaining Ring - M3	9-107
0720 0030E	Retaining Ring - M3	11-103
0720 0030E	Retaining Ring - M3	13-104
0720 0030E	Retaining Ring - M3	17-110
0720 0030E	Retaining Ring - M3	19-103
0720 0030E	Retaining Ring - M3	23-106
0720 0030E	Retaining Ring - M3	25-103
0720 0040E	Retaining Ring - M4	5-104
0720 0040E	Retaining Ring - M4	7-106
0720 0040E	Retaining Ring - M4	9-108
0720 0040E	Retaining Ring - M4	13-105
0720 0040E	Retaining Ring - M4	15-108
0720 0040E	Retaining Ring - M4	17-111
0720 0040E	Retaining Ring - M4	19-104
0720 0040E	Retaining Ring - M4	21-105
0720 0040E	Retaining Ring - M4	25-112
0720 0050E	Retaining Ring - M5	25-110
0720 0060E	Retaining Ring - M6	7-108
0720 0060E	Retaining Ring - M6	15-105
0720 0070E	Retaining Ring - M7	7-109
0720 0070E	Retaining Ring - M7	25-111
0741 3505	Ball Bearing - 5x10x4	21-106
0741 3506	Ball Bearing - 6x12x4 mm	7-107
0741 3506	Ball Bearing - 6x12x4 mm	9-105

Part No.	Description	Page and Index No.
0741 3506	Ball Bearing - 6x12x4 mm	13-106
0741 3506	Ball Bearing - 6x12x4 mm	21-107
0741 3506	Ball Bearing - 6x12x4 mm	25-113
0805 3291	Ball Bearing - 8x16x5mm	7-104
0951 3006W	Philips Screw With Flat Washer-M3x6	9-110
0951 3006W	Philips Screw With Flat Washer-M3x6	21-108
0951 3006W	Philips Screw With Flat Washer-M3x6	25-114
0951 3010W	PhilipsScrew With Flat Washer-M3x10	11-105
0951 3010W	PhilipsScrew With Flat Washer-M3x10	23-103
0951 4006W	Philips Screw With Flat Washer-M4x6	9-111
0951 4006W	Philips Screw With Flat Washer-M4x6	11-102
0951 4006W	Philips Screw With Flat Washer-M4x6	19-102
0951 4006W	Philips Screw With Flat Washer-M4x6	21-109
0951 4008W	Philips Screw With Flat Washer-M4x8	9-109
0951 4012B	Philips Screw With Flat Washer	25-115
0957 4008B	Philips Screw W/F Washer - M4x8	25-121
0965 4006W	Tapping Screw - M4x6	9-112
1101 0328	Connector - Pin Contact	29-101
1102 1048	Pin Housing - Mate-N-Lock - 3P	29-102
1102 4201	Connector - 2P	29-103
1102 4203	CT Header - 4P	29-104
1102 4204	CT Header - 5P	29-105
1102 4208	Connector - 9P	29-106
1102 4209	CT Header - 10P	29-107
1102 4212	CT Header - 15P	29-108
1102 4633	CT Header - 4P	29-109
1102 5003	Fiber Connector - DC1002 - 2P	29-110
1102 5007	CT Header - 14P	29-111
1103 1493	Connector	29-112
1103 1737	Connector - 15P	29-113
1103 1774	Pin Header - 8P	29-114
1103 1778	Pin Header - 12P	29-115
1104 0588	Dip Socket - 28P	29-116
1105 0005	Nylon Clamp - 3N	11-104
1105 0008	Nylon Clamp - 2N	25-117

Part No.	Description	Page and Index No
1105 0062	Nylon Clamp - 6N	23-107
1105 0192	Locking Support	25-109
1105 0310	Wire Clamp	25-119
1105 0319	Harness Clamp	17-112
1105 0326	Locking Support	25-108
1105 0328	Harness Clamp - ES-0505	25-118
1106 0289	Bushing - SR-5N-1	25-120
1107 0459	Fuse - 5A 250V	25-101
1107 0459	Fuse - 5A 250V	29-117
1204 1385	Push Switch	29-118
1204 1422	Dip Switch - 51D-0401	29-119
1204 1433	Microswitch	25-122
1204 2188	Interlock Switch	25-107
1204 2194	Fuse Holder	29-120
1400 0368	Transistor - 2SC3325	29-121
1400 0454	Transistor - 2SB710A	29-122
1400 0493	Transistor - 2SC3734-B24	29-123
1400 0574	TR-2SD874A	29-124
1400 0626	Transistor - 2SA1461	29-125
1401 0200	Transistor - 2SD633	29-126
1401 0919	Mosfet Array - 4AM14	29-127
1401 0964	FET-2SJ172	29-128
1402 0780	Diode - 200V - 1A - 11ES2	29-129
1402 0783	Red LED - GI3PR8	29-130
1402 1304	Diode - 100V 1A	29-131
1403 0519	Photocoupler - TLP621	29-132
1407 2054	IC - TD62308F	29-133
1407 2218	TTLIC - SN74LS06NS	29-134
1407 2746	IC - CXD1095Q	29-135
1407 3202	IC - 74HC00A	29-136
1407 3283	IC - TC74HC373AF	29-137
1407 3286	IC - TC74HC04AF	29-138
1407 3287	IC - TC74HC393AF	29-139
1407 3492	CPU -78C10AGF	29-140
1407 3522	IC - TD62304AF	29-141

Part No.	Description	Page and Index No.
1407 3541	IC - HD74LS26FP	29-142
1407 3695	IC - HD74HC93FP	29-143
1408 0397	Comparator - NJM2901M	29-144
1408 0398	Comparator - NJM2903M	29-145
1408 0538	IC - SI8301L	29-146
1408 0598	IC - MB3773PF	29-147
1408 0599	IC - M51971EP	29-148
1408 1007	Regurator - UPC7812AFH	29-149
1503 0687	Oscillator - 14.74 MHZ	29-150
1600 0218	Resistor 3.3 P 5W	29-151
1600 1158	Resistor - 390P 5% 1W	29-152
1600 1434	Resistor - 18 P 5W 10%	29-153
1600 1683	Resistor - 0.22 P 5% 2W	29-154
1600 1730	Resistor - 1K P 5% 1W	29-155
1601 8138	Variable Resistor - 30K P 0.75W	29-156
1601 8148	Variable Resistor - 20K P 0.5W	29-157
1604 1360	Capacitor - 3300 η F 10V	29-158
1606 1178	Capacitor - 0.01 η F 50V	29-159
1606 1348	Capacitor - 0.022 η F 50V	29-160
1630 3101	Resistor - 100P - 1/10W	29-161
1630 3102	Resistor - 1KP 1/10W 5%	29-162
1630 3103	Resistor - 10KP 1/10W 5%	29-163
1630 3105	Resistor - 1M P 5% 1/10W	29-164
1630 3121	Resistor - 120 P 5% 1/10w	29-165
1630 3152	Resistor - 1.5K P - 1/10W	29-166
1630 3153	Resistor - 15K P 5% 1/10W	29-167
1630 3159	Resistor - 1.5K P 5% 10W	29-168
1630 3200	Resistor - 20 P 5% 1/10W	29-169
1630 3202	Resistor - 2KP -1/10W	29-170
1630 3203	Resistor - 20 P 5% 1/10W	29-171
1630 3332	Resistor - 3.3KP 1/10W 5%	29-172
1630 3393	Resistor - 39K P 1/10W	29-173
1630 3432	Resistor - 4.3K P 5% 1/10W	29-174
1630 3472	Resistor - 4.7KP 1/10W 5%	29-175

Part No.	Description	Page and Index No.
1630 3474	Resistor - 470K P 5% 1/10W	29-176
1630 3562	Resistor - 5.6K P 5% 1/10W	29-177
1630 3563	Resistor - 56K P 5% 1/10W	29-178
1630 3682	Resistor - 6.8KP - 1/10W	29-179
1630 3821	Resistor - 820 P 5% 1/10W	29-180
1630 3913	Resistor - 91K P 5% 1/10W	29-181
1633 0000	Resistor - 0P 1/10W:Jamper Chip	29-182
1640 5101	Capacitor - 100 η F 20% 50V	29-183
1640 5102	Capacitor - 1000 η F 20% 50V	29-184
1640 5109	Capacitor - 1 η F - 20% - 50V	29-185
1640 5220	Capacitor - 22 η F 20% 50V	29-186
1640 5229	Capacitor - 2.2 η F 20% 50V	29-187
1660 3101	Capacitor - 100PF 50V	29-188
1660 3330	Capacitor - 33PF 5% 50V	29-189
1660 3331	Capacitor - 330PF 5% 50V	29-190
1660 5102	Capacitor - 1000PF 10% 50V	29-191
1660 5222	Capacitor - 2200PF 10% 50V	29-192
1660 7103	Capacitor - 10000PF 50V	29-193
1660 7104	Capacitor - 100000PF 50V	29-194
1660 7223	Capacitor - 22000PF +80 -20% 50V	29-195
1660 7473	Capacitor - 47000PF +80% -20% 50V	29-196